



ProteinExpress

ProteinExpress Co., Ltd.
Chiba University Inohana Innovation Plaza
1-8-15, Inohana, Chuo-ku,
Chiba-shi, Chiba 260-0856, Japan
Tel: +81-43-202-5755, Fax: +81-43-202-5756
E-mail: antibody@proteinexpress.co.jp
Web: www.proteinexpress.co.jp

Anti-Mouse MAP7D1 (KIAA1187) Polyclonal Antibody, Rabbit

Code # : MK11870910 [FAF00758], (Lot# XXX)

Gene : mouse Microtubule-associated protein 7 domain containing 1
(mMAP7D1, mKIAA1187)

Immunogen : GX0479 (GST-fusion protein, 179 amino acids)
PTAAPSVTPSKPMAGTTDREEATRLLAEKRRQAREQREREEQERKLQAERDKRMREEQLARE
AEARAEREAEARRREEQEAAREKAQAEQEEQERLQKQKEEAARSREEAERQRQEREKHFQK
EEQERQERRKRLEEIMKRTRKSEAAETKVRILRLGSGSWGEEERLQQRSLQSRGRIQ

Format : Affinity Purified Rabbit IgG

Constitution : PBS containing with 50% glycerol and 0.02% of NaN₃

Quantity : 50 µg (250 µL)

Specificity : Specific to recombinant protein GX0479. This antibody detects mMAP7D1 protein. It also recognizes human MAP7D1 protein. Details are shown in the InGaP database.
(<http://webcreate.kazusa.or.jp/create/index.jsp>)
Other species have not been tested.

Application : Western blotting (1 : 1,000), Other applications have not been tested.

Storage : Store at -20°C. Avoid freeze-thaw cycles.

References : 1) Okazaki, N. *et al.*: *DNA Res.*, 10(1), 35 (2003).

For research use only, not for diagnostic use



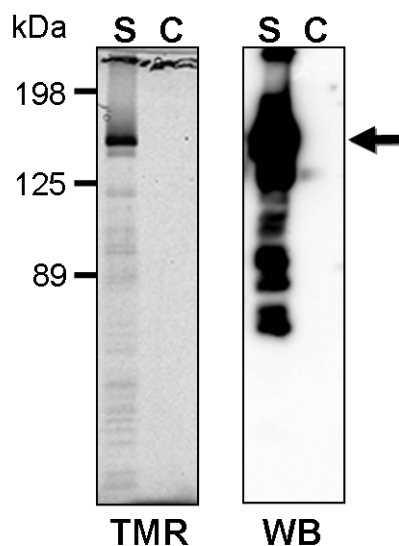
Kazusa DNA Research Institute
2-6-7, Kazusa-kamatari,
Kisarazu, Chiba 292-0818 JAPAN
<http://www.kazusa.or.jp>



ProteinExpress

ProteinExpress Co., Ltd.
Chiba University Inohana Innovation Plaza
1-8-15, Inohana, Chuo-ku,
Chiba-shi, Chiba 260-0856, Japan
Tel: +81-43-202-5755, Fax: +81-43-202-5756
E-mail: antibody@proteinexpress.co.jp
Web: www.proteinexpress.co.jp

Anti-Mouse MAP7D1 (MK11870910)



TMR-Label(Left) & Western blot(Right)
**S: Total lysate of HaloTag-fused KIAA1187
expressed HEK293 cells (4 μ g)**
C: Control HEK293 cell lysate (4 μ g)



Kazusa DNA Research Institute
2-6-7, Kazusa-kamatari,
Kisarazu, Chiba 292-0818 JAPAN
<http://www.kazusa.or.jp>