

ATP1A1 antibody

Product Information

Catalog No.:	FNab00691
Size:	100µg
Form:	liquid
Purification:	Immunogen affinity purified
Purity:	≥95% as determined by SDS-PAGE
Host:	Rabbit
Clonality:	polyclonal
Clone ID:	None
IsoType:	IgG
Storage:	PBS with 0.02% sodium azide and 50% glycerol pH 7.3, -20°C for 12 months (Avoid repeated freeze / thaw cycles.)

Background

The protein encoded by this gene belongs to the family of P-type cation transport ATPases, and to the subfamily of Na⁺/K⁺ -ATPases. Na⁺/K⁺ -ATPase is an integral membrane protein responsible for establishing and maintaining the electrochemical gradients of Na and K ions across the plasma membrane. These gradients are essential for osmoregulation, for sodium-coupled transport of a variety of organic and inorganic molecules, and for electrical excitability of nerve and muscle. This enzyme is composed of two subunits, a large catalytic subunit (alpha) and a smaller glycoprotein subunit (beta). The catalytic subunit of Na⁺/K⁺ -ATPase is encoded by multiple genes. This gene encodes an alpha 1 subunit. Multiple transcript variants encoding different isoforms have been found for this gene.

Immunogen information

Immunogen:	ATPase, Na ⁺ /K ⁺ transporting, alpha 1 polypeptide
Synonyms:	Sodium/potassium-transporting ATPase subunit alpha-1 (Na(+)/K(+) ATPase alpha-1 subunit) Sodium pump subunit alpha-1 ATP1A1
Observed MW:	113 kDa
Uniprot ID :	P05023

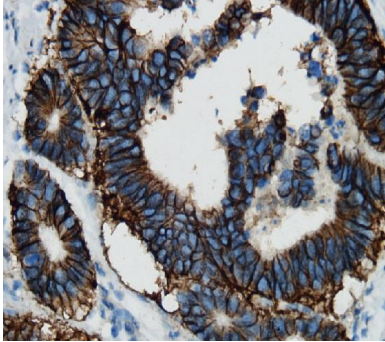
Application

Reactivity:	Human, Mouse, Rat, Rabbit, pig, monkey, zebrafish, hamster
-------------	--

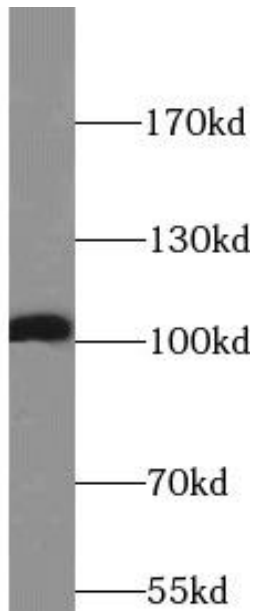
Tested Application: ELISA, IHC, WB

Recommended dilution: WB: 1:500 - 1:2000; IHC: 1:50 - 1:500

Image:



Immunohistochemistry of paraffin-embedded human colon cancer tissue slide using FNab00691(ATP1A1 Antibody) at dilution of 1:100



mouse heart tissue were subjected to SDS PAGE followed by western blot with FNab00691(ATP1A1 Antibody) at dilution of 1:1000