

Ankyrin R Antibody
Ankyrin R Antibody, Clone S388A-10
Catalog # ASM10319

Specification

Ankyrin R Antibody - Product Information

Application	WB
Primary Accession	P16157
Other Accession	NP_000028.3
Host	Mouse
Isotype	IgG2B
Reactivity	Human, Mouse, Rat
Clonality	Monoclonal

Description

Mouse Anti-Human Ankyrin R Monoclonal IgG2B

Target/Specificity

Detects ~200kDa. Does not cross-react with Ankyrin-B or Ankyrin-G.

Other Names

Ankyrin-R Antibody, Ankyrin-1 Antibody, Erythrocyte Ankyrin Antibody, ANK-1 Antibody, ANK Antibody, rCG_43073 Antibody

Immunogen

Fusion protein amino acids 1-1881 (full-length) of human Ankyrin-R

Purification

Protein G Purified

Storage **-20°C**

Storage Buffer

PBS pH7.4, 50% glycerol, 0.1% sodium azide

Shipping Temperature **Blue Ice or 4°C**

Certificate of Analysis

A 1:100 dilution of SMC-487 was sufficient for detection of Ankyrin R in 20 µg of mouse brain lysate by ECL immunoblot analysis using Goat anti-mouse IgG:HRP as the secondary antibody.

Cellular Localization

Cytoplasm | Cytoskeleton | Myofibril | Sarcomere | M line

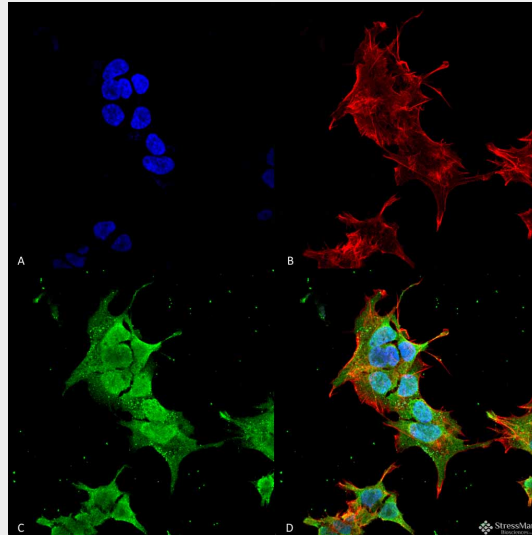
Ankyrin R Antibody - Protocols

Provided below are standard protocols that you may find useful for product applications.

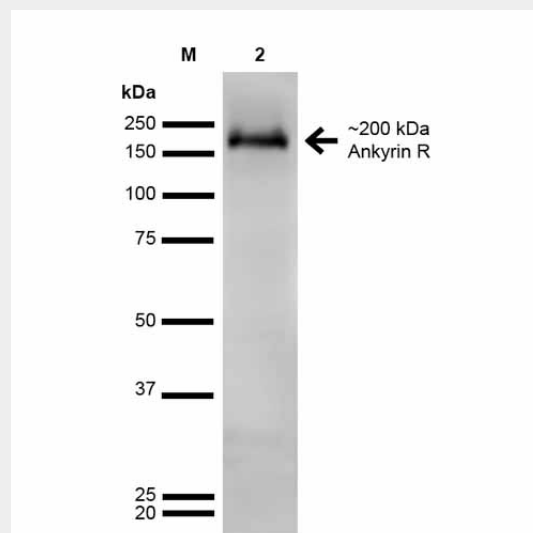
- [Western Blot](#)
- [Blocking Peptides](#)
- [Dot Blot](#)
- [Immunohistochemistry](#)

- [Immunofluorescence](#)
- [Immunoprecipitation](#)
- [Flow Cytometry](#)
- [Cell Culture](#)

Ankyrin R Antibody - Images



Immunocytochemistry/Immunofluorescence analysis using Mouse Anti-Ankyrin R Monoclonal Antibody, Clone S388A-10 (ASM10319). Tissue: Neuroblastoma cell line (SK-N-BE). Species: Human. Fixation: 4% Formaldehyde for 15 min at RT. Primary Antibody: Mouse Anti-Ankyrin R Monoclonal Antibody (ASM10319) at 1:100 for 60 min at RT. Secondary Antibody: Goat Anti-Mouse ATTO 488 at 1:100 for 60 min at RT. Counterstain: Phalloidin Texas Red F-Actin stain; DAPI (blue) nuclear stain at 1:1000; 1:5000 for 60 min RT, 5 min RT. Localization: Cytoplasm, Nucleus. Magnification: 60X. (A) DAPI (blue) nuclear stain (B) Phalloidin Texas Red F-Actin stain (C) Ankyrin R Antibody (D) Composite.



Western Blot analysis of Rat Brain showing detection of ~200 kDa Ankyrin-R protein using Mouse Anti-Ankyrin-R Monoclonal Antibody, Clone S388A-10 (ASM10319). Lane 1: MW Ladder. Lane 2: Rat Brain. Load: 20 µg. Block: 2% GE Healthcare Blocker for 1 hour at RT. Primary Antibody: Mouse Anti-Ankyrin-R Monoclonal Antibody (ASM10319) at 1:1000 for 16 hours at 4°C. Secondary Antibody: Goat Anti-Mouse IgG: HRP at 1:200 for 1 hour at RT. Color Development: ECL solution

for 6 min at RT. Predicted/Observed Size: ~200 kDa.

Ankyrin R Antibody - Background

Ankyrins are a family of adaptor proteins that mediate the attachment of integral membrane proteins to the spectrin-actin based membrane skeleton (1). Ankyrins have binding sites for the beta subunit of spectrin and at least 12 families of integral membrane proteins. This linkage is required to maintain the integrity of the plasma membranes and to anchor specific ion channels, ion exchangers and ion transporters in the plasma membrane. Ankyrin R, or Ank1, was first discovered in erythrocytes, but has since also been located in the brain and muscles. Mutations are associated with hereditary spherocytosis and Alzheimer's disease (2).

Ankyrin R Antibody - References

1. Bennett V., Baines A.J. (2001) *Physiol. Rev.* 81 (3): 1353-92.
2. Genes and mapped phenotypes. (n.d.). Retrieved April 21, 2015, from <http://www.ncbi.nlm.nih.gov/gene/286>