



ProteinExpress

ProteinExpress Co., Ltd.
Chiba University Inohana Innovation Plaza
1-8-15, Inohana, Chuo-ku,
Chiba-shi, Chiba 260-0856, Japan
Tel: +81-43-202-5755, Fax: +81-43-202-5756
E-mail: antibody@proteinexpress.co.jp
Web: www.proteinexpress.co.jp

Anti-Mouse CAMTA2 (KIAA0909) Polyclonal Antibody, Rabbit

Code # : MKA0909AF, (Lot# XXX)

Gene : mouse calmodulin binding transcription activator 2 (CAMTA2),
(mCAMTA2, mKIAA0909)

Immunogen : GX0828 (GST-fusion protein, 202 amino acids)
AAQGYARLIETLSQWRSVETGSLDLEQEVDP LNVDHFSC TPLMWACALGHLEAAVLLFCWNRQ
ALSIPDSLGRPLSV AHSRGHVRLARCLEELQRQELSVEHPLALSPSSSPDTGLSSASSPSEL
SDGTFSVTSAYSSAPDGSPPPAPPLASDISMEMIPGQLSCGAPETPLLLMDYEATNSKEPAPSP
CGPPLAQDNAGA

Format : Affinity Purified Rabbit IgG

Constitution : PBS containing with 50% glycerol and 0.02% of NaN₃

Quantity : 50 µg (250 µL)

Specificity : Specific to recombinant protein GX0828. This antibody detects mCAMTA2 protein. Other species have not been tested.

Application : Western blotting (1 : 1,000), Other applications have not been tested.

Storage : Store at -20°C. Avoid freeze-thaw cycles.

References : 1) Okazaki, N. *et al.*: *DNA Res.*, 10(1), 35 (2003).

For research use only, not for diagnostic use



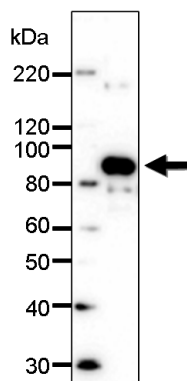
Kazusa DNA Research Institute
2-6-7, Kazusa-kamatari,
Kisarazu, Chiba 292-0818 JAPAN
<http://www.kazusa.or.jp>



ProteinExpress

ProteinExpress Co., Ltd.
Chiba University Inohana Innovation Plaza
1-8-15, Inohana, Chuo-ku,
Chiba-shi, Chiba 260-0856, Japan
Tel: +81-43-202-5755, Fax: +81-43-202-5756
E-mail: antibody@proteinexpress.co.jp
Web: www.proteinexpress.co.jp

Anti-Mouse CAMTA2 (MKA0909AF)



Western blot analysis

Bacterial lysate of MBP-fused antigen
protein (mKIAA0909, partial)



Kazusa DNA Research Institute
2-6-7, Kazusa-kamatari,
Kisarazu, Chiba 292-0818 JAPAN
<http://www.kazusa.or.jp>