

TECHNICAL DATA SHEET

Purified Rabbit Anti-GFP

Catalog Number: TP401

Lot Number: 071519

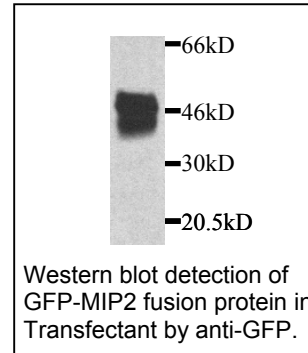
Content: Protein A purified rabbit IgG, 200 µg, with 0.1% sodium azide, lyophilized.

(Reconstitute to 1 mg/ml by adding 200 µl H₂O)

Product Description and Usage: For research use only. This polyclonal antibody was generated using *E. coli*-expressed full length GFP (green fluorescent protein) as an immunogen. This antibody reacts with wild-type GFP, and its variants, such as EGFP, EBFP. The tested titer for Western blot is 1:5,000. The tested titer for immunoprecipitation is 1:200 to 1:500.

Storage Condition: 4°C for short term storage or -20°C in small aliquots for long term storage. Avoid repeated freeze and thaw.

Background: Green fluorescent protein (GFP) is a spontaneously fluorescent protein isolated from the Pacific jellyfish, *Aequorea victoria*. It transduces the blue chemiluminescence into green fluorescent light. Since the molecular cloning of GFP cDNA¹ and the demonstration that GFP can be



expressed as a functional transgene², GFP has become a unique new tool with exciting applications in cell, developmental and molecular biology³. GFP is an ideal fluorescent probe: its fluorescence is not species specific (it has been expressed from bacteria, yeast, plant to mammalian cells); it can fuse with proteins of interest without interfering significantly with their assembly or function.

References:

1. Prasher, DC. et al. (1992) Primary structure of the *Aequorea victoria* green-fluorescent protein. *Gene* 111(2):229-33
2. Chalfie M, et al. (1994) Green fluorescent protein as a marker for gene expression. *Science* 263(5148):802-5
3. Tsien RY. (1998) The green fluorescent protein. *Annu Rev Biochem.* 67:509-544