

RP01207

Leader in Biomolecular Solutions for Life Science



# Recombinant Rat CSF-2/GM-CSF Protein

Catalog No.: RP01207 **Recombinant**

## Sequence Information

---

Species	Gene ID	Swiss Prot
HEK293 cells	116630	P48750

### Tags

N-His

### Synonyms

GMCSF;CSF2

## Product Information

---

Source	Purification
HEK293 cells	> 97% by SDS-PAGE.

### Endotoxin

< 1.0 EU/μg of the protein by LAL method.

### Formulation

Lyophilized from a 0.22 μm filtered solution of PBS, pH 7.4. Contact us for customized product form or formulation.

### Reconstitution

Centrifuge the vial before opening. Reconstitute to a concentration of 0.1-0.5 mg/mL in sterile distilled water. Avoid vortex or vigorously pipetting the protein. For long term storage, it is recommended to add a carrier protein or stabilizer (e.g. 0.1% BSA, 5% HSA, 10% FBS or 5% Trehalose), and aliquot the reconstituted protein solution to minimize freeze-thaw cycles.

## Contact

---



[www.abclonal.com](http://www.abclonal.com)

## Background

---

### Basic Information

---

#### Description

Recombinant Rat CSF-2/GM-CSF Protein is produced by HEK293 cells expression system. The target protein is expressed with sequence (Ala18-Lys144) of rat GM-CSF/CSF2 (Accession #NP\_446304.1.) fused with a 6×His tag at the N-terminus.

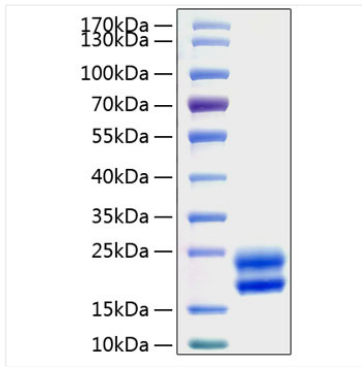
#### Bio-Activity

Measured in a cell proliferation assay using SP2/O mouse myeloma cells. The ED<sub>50</sub> for this effect is 7.5-30 pg/mL.

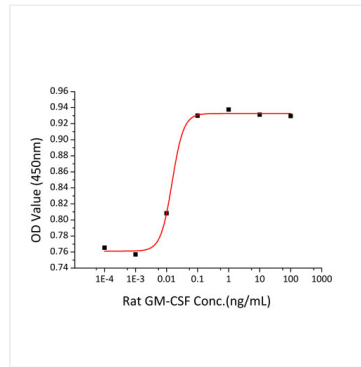
#### Storage

Store at -20°C. Store the lyophilized protein at -20°C to -80 °C up to 1 year from the date of receipt. After reconstitution, the protein solution is stable at -20°C for 3 months, at 2-8°C for up to 1 week. Avoid repeated freeze/thaw cycles.

## Validation Data



Recombinant Rat CSF-2/GM-CSF Protein was determined by SDS-PAGE with Coomassie Blue, showing bands at 20 kDa and 23 kDa.



Recombinant Rat GM-CSF/CSF2 promotes the proliferation of SP2/O mouse myeloma cells. The ED<sub>50</sub> for this effect is 7.5-30 pg/mL.