

NeoPRO ECL substrates

| | |
|-----------------------|------------------|
| #Cat: NB-78-00001 | Size:2x125mL kit |
| #Cat: NB-78-00002 | Size:2x125mL kit |
| #Cat: NB-78-00003 | Size:2x125mL kit |
| #Cat: NB-78-00004 | Size:2x50mL kit |
| #Cat: NB-78-00005 | Size:2x50mL kit |
| #Cat: NB-78-00006-20 | Size:2x10mL |
| #Cat: NB-78-00006-100 | Size:2x50mL |

Two-Solution ECL Substrates for Western Blotting

Different levels of sensitivity available for your Western blotting

NeoPRO is our product line of chemiluminescent substrates for Western blotting.

Neo Biotech offers a family of products with different sensitivity, allowing from picogram to femtogram detection range. Our proprietary technology enables fine tuning of signal intensity in order to obtain the assay sensitivity and signal duration best suited to meet each experimental need.

| Product | When to use |
|---|---|
| NeoPRO Nano Western ECL Substrate Cod. NB-78-00001 | Mid picogram detection |
| NeoPRO Pico Western ECL Substrate Cod. NB-78-00002 | Low picogram detection |
| NeoPRO Pico PLUS Western ECL Substrate Cod. NB-78-00003 | Mid femtogram detection |
| NeoPRO Femto Western ECL Substrate Cod. NB-78-00004 | Mid to low femtogram detection |
| NeoPRO Femto PLUS Western ECL Substrate Cod. NB-78-00005 | Low femtogram detection |
| NeoPRO Atto Western ECL Substrate Cod. NB-78-00006 | Detection of trace amounts of proteins |

NeoPRO Nano Western ECL Substrate

Our entry level substrate for mid picogram detection level.



Western blotting detection of ERK-1/2 on Hela cell lysate with NeoPRO Nano Western

Sample: Two-fold dilution of Hela cell lysate from 5 μ g to 0.078 μ g

Primary antibody: Rabbit anti ERK-1/2 1:1000.

Secondary antibody: Donkey anti-rabbit IgG HRP 1:5000.

Imager: chemiluminescence imager

Exposure time: 90 seconds

NeoPRO Pico Western ECL Substrate

Substrate for very abundant target and sample.

Stable light output for low picogram detection level.



Western blotting detection of HDAC-1 on Hela cell lysate with NeoPRO Pico Western.

Sample: Two-fold dilution of Hela cell lysate from 5 μ g to 0.078 μ g

Primary antibody: Rabbit-anti Human HDAC-1 1:2000.

Secondary antibody: Goat anti-rabbit IgG HRP 1:20000.

Imager: chemiluminescence imager .

Exposure time: 180 seconds

NeoPRO Pico PLUS Western ECL Substrate

Versatile substrate for mid-femtogram detection level.

Less optimization required.

High sensitivity combined with a broad linear dynamic range for an accurate quantification of both low and high abundance proteins in the same experiment.

Extremely long signal duration.



Western blotting detection of HDAC-1 on Hela cell lysate with NeoPRO Pico PLUS Western ECL Substrate

Sample: Two-fold dilution of Hela cell lysate from 5 μ g to 0.078 μ g

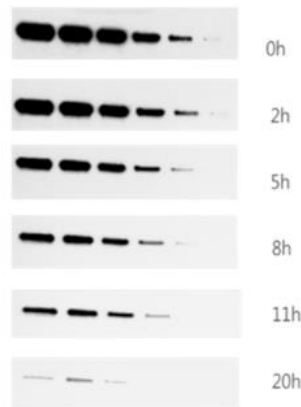
Primary antibody: Rabbit-anti Human HDAC-1 1:5000.

Secondary antibody: Goat anti-rabbit IgG HRP 1:75000.

Imager: chemiluminescence imager .

Exposure time: 180 seconds.

NeoPRO Pico PLUS Western

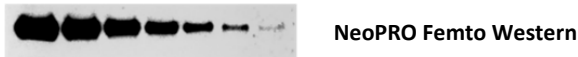


Extended signal duration of NeoPRO Pico PLUS Western

For either NeoPRO Pico PLUS Western, exposure time is 180 seconds for each time points (0-2-5-8-11-20 hours).

NeoPRO Femto Western ECL Substrate

Perfect choice for applications requiring very high sensitivity and an extended signal duration. Strong signal in the presence of a very low background level, resulting in a high signal-to-noise ratio for mid to low femtogram detection level.



Western blotting detection of HDAC-1 on Hela cell lysate with NeoPRO Femto Western

Sample: Two-fold dilution of Hela cell lysate from 5 μ g to 0.078 μ g

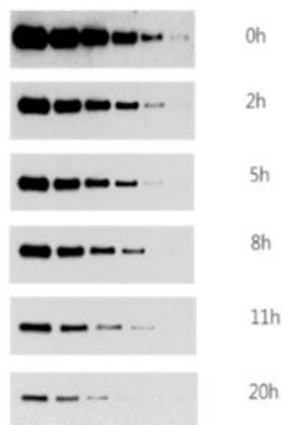
Primary antibody: Rabbit-anti Human HDAC-1 1:7500.

Secondary antibody: Goat anti-rabbit IgG HRP 1:100000.

Imager: chemiluminescence imager .

Exposure time: 180 seconds.

NeoPRO Femto Western

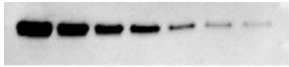


Extended signal duration with NeoPRO Femto Western

For either NeoPRO Femto Western, exposure time is 180 seconds for each time points (0-2-5-8-11-20 hours).

NeoPRO Femto PLUS Western ECL Substrate

Ultra-sensitive substrate with low-femtogram detection level.
 Excellent signal intensity and sensitivity to detect very low amounts of proteins using less antibodies.
 Wide linear dynamic range and ultra-high sensitivity for quantitative analysis.



NeoPRO Femto PLUS Western

Western blotting detection of HDAC-1 on Hela cell lysate with Femto PLUS Western

Sample: Two-fold dilution of Hela cell lysate from 2.5 µg to 0.039 µg
 Primary antibody: Rabbit-anti Human HDAC-1 1:10000.
 Secondary antibody: Goat anti-rabbit IgG HRP 1:300000.
 Imager: chemiluminescence imager.
 Exposure time: 120 seconds.

NeoPRO Atto Western ECL Substrate

The most powerful substrate available to date allowing the detection of trace amounts of proteins.
 Extreme signal intensity and sensitivity to enhance the accuracy of Western blotting for a clearer interpretation of the faintest bands.
 Best choice to detect minute amounts of proteins, using extremely diluted antibodies or loading limited amounts of cell lysates, thus saving precious samples and expensive primary antibodies.
 Extremely high light emission for very bright bands in few seconds of exposure.

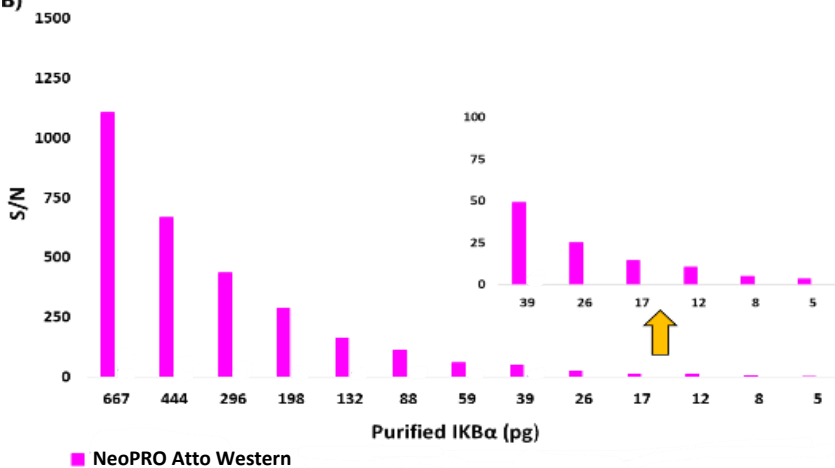
A)



NeoPRO Atto Western

NeoPRO Femto PLUS Western

B)



Superior sensitivity of NeoPRO Atto Western

A) Purified IKB α 1,5 -fold dilutions from 1000 to 5,1 µg Ab 1° Rabbit anti IKB α 1:1000 Ab 2° Goat anti rabbit 1:500000
 Exposure time: 10 seconds with chemiluminescence imager .
 B) Signal-to-noise ratio (S/N) analysis. The inset enlargement shows the enhanced sensitivity of NeoPRO Atto Western.