

**ATG13 Antibody**  
Catalog # ASM10530

**Specification**

---

**ATG13 Antibody - Product Information**

Application	<b>WB</b>
Primary Accession	<a href="#">O75143</a>
Other Accession	<a href="#">NP_001136145.1</a>
Host	<b>Rabbit</b>
Reactivity	<b>Human</b>
Clonality	<b>Polyclonal</b>

**Description**

Rabbit Anti-Human ATG13 Polyclonal

**Target/Specificity**

Detects ~56-63kDa.

**Other Names**

ATG13\_Human Antibody, Autophagy related protein 13 Antibody, KIAA0652 Antibody

**Immunogen**

Synthetic peptide from the mid-protein range of human ATG13

**Purification**

Peptide Affinity Purified

Storage **-20°C**

**Storage Buffer**

PBS, 50% glycerol, 0.09% sodium azide

Shipping Temperature **Blue Ice or 4°C**

**Certificate of Analysis**

A 1:1000 dilution of SPC-657 was sufficient for detection of ATG13 on HEK293 lysates using Goat anti-rabbit IgG:HRP as the secondary antibody.

**Cellular Localization**

Cytoplasm | Cytosol | Preautophagosomal structure

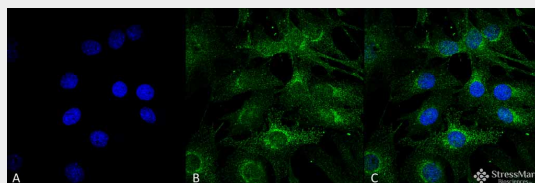
**ATG13 Antibody - Protocols**

Provided below are standard protocols that you may find useful for product applications.

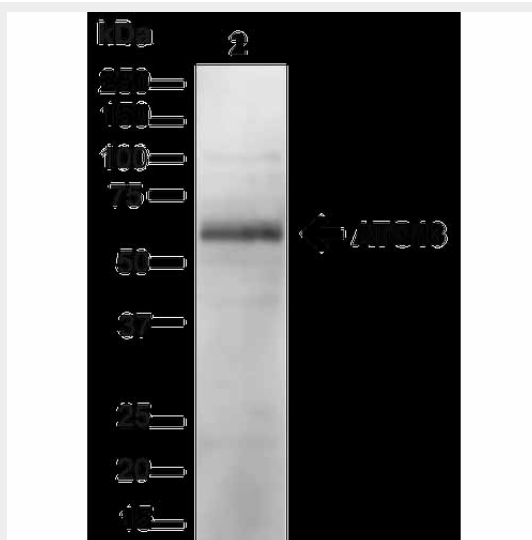
- [Western Blot](#)
- [Blocking Peptides](#)
- [Dot Blot](#)
- [Immunohistochemistry](#)
- [Immunofluorescence](#)
- [Immunoprecipitation](#)
- [Flow Cytometry](#)

• [Cell Culture](#)

**ATG13 Antibody - Images**



Immunocytochemistry/Immunofluorescence analysis using Rabbit Anti-ATG13 Polyclonal Antibody (ASM10530). Tissue: Myoblast cell line (C2C12). Species: Mouse. Fixation: 4% Formaldehyde for 15 min at RT. Primary Antibody: Rabbit Anti-ATG13 Polyclonal Antibody (ASM10530) at 1:100 for 60 min at RT. Secondary Antibody: Goat Anti-Rabbit ATTO 488 at 1:100 for 60 min at RT. Counterstain: DAPI (blue) nuclear stain at 1:5000 for 5 min RT. Localization: Cytoplasm, Cytosol. Magnification: 60X. (A) DAPI (blue) nuclear stain (B) Phalloidin Texas Red F-Actin stain (C) ATG13 Antibody (D) Composite.



Western blot analysis of Human HEK293 showing detection of ~56.6kDa ATG13 protein using Rabbit Anti-ATG13 Polyclonal Antibody (ASM10530). Lane 1: MW Ladder. Lane 2: Human HEK293 (20 µg). Load: 20 µg. Block: 5% milk + TBST for 1 hour at RT. Primary Antibody: Rabbit Anti-ATG13 Polyclonal Antibody (ASM10530) at 1:1000 for 1 hour at RT. Secondary Antibody: Goat Anti-Rabbit: HRP at 1:2000 for 1 hour at RT. Color Development: TMB solution for 12 min at RT. Predicted/Observed Size: ~56.6kDa.

**ATG13 Antibody - Background**

ATG13 is an autophagy factor required for phagosome formation. It is a target of the TOR kinase signaling pathway that regulates autophagy through phosphorylation of ATG13 and ULK1, and the regulation of the ATG13-ULK1-RB1CC1 complex (1-3).

**ATG13 Antibody - References**

1. Mercer C.A., Kaliappan A., Dennis P.B. (2009) *Autophagy*. 5(5): 649-662.
2. Hosokawa N., et al. (2009) *Mol Biol Cell*. 20(7): 1981-1991.
3. Chan E.Y., Longatti A., McKnight N.C., Tooze S.A. (2009) *Mol Cell Biol*. 29(1): 157-171.