

KLHL41 antibody

Product Information

Catalog No.:	FNab04474
Size:	100µg
Form:	liquid
Purification:	Immunogen affinity purified
Purity:	≥95% as determined by SDS-PAGE
Host:	Rabbit
Clonality:	polyclonal
Clone ID:	None
IsoType:	IgG
Storage:	PBS with 0.02% sodium azide and 50% glycerol pH 7.3, -20°C for 12 months(Avoid repeated freeze / thaw cycles.)

Background

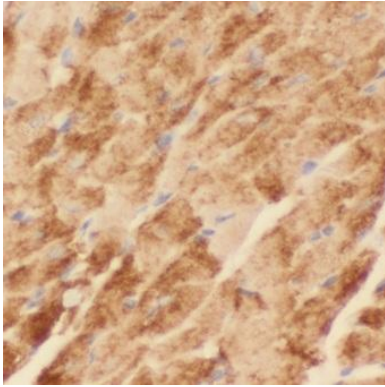
None

Immunogen information

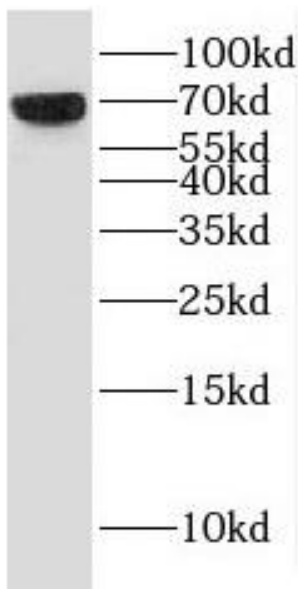
Immunogen:	kelch repeat and BTB(POZ) domain containing 10
Synonyms:	Kelch-like protein 41 Kel-like protein 23 Kelch repeat and BTB domain-containing protein 10 Kelch-related protein 1 Sarcosin KLHL41 KBTBD10 KRP1
Observed MW:	68 kDa
Uniprot ID :	O60662

Application

Reactivity:	Human, Mouse
Tested Application:	ELISA, WB, IHC
Recommended dilution:	WB: 1:500-1:2000; IHC: 1:20-1:200
Image:	



Immunohistochemistry of paraffin-embedded human skeletal muscle tissue slide using FNab04474(KBTBD10 Antibody) at dilution of 1:50



mouse heart tissue were subjected to SDS PAGE followed by western blot with FNab04474(KBTBD10 Antibody) at dilution of 1:1500