

SNAP-25 Antibody
SNAP25 Antibody, Clone SP-12
Catalog # ASM10122**Specification**

SNAP-25 Antibody - Product Information

Application	IHC, WB
Primary Accession	P60880
Other Accession	NP_570824.1
Host	Mouse
Isotype	IgG1
Reactivity	Human, Mouse, Rat, Pig, Cat
Clonality	Monoclonal
Format	APC

Description

Mouse Anti-Human SNAP-25 Monoclonal IgG1

Target/Specificity

Detects ~29kDa.

Other Names

Bdr Antibody, RIC4 Antibody, SNAP25 Antibody, SNAP-25B Antibody, SNP25 Antibody, SUP Antibody, super protein Antibody, synaptosomal associated 25kDa protein Antibody

Immunogen

Raised against a crude synaptic preparation from the post mortem human brain

Purification

Protein G Purified

Storage **-20°C****Storage Buffer**

PBS pH7.4, 50% glycerol, 0.09% sodium azide

Shipping Temperature **Blue Ice or 4°C****Certificate of Analysis**

1 µg/ml of SMC-180 was sufficient for detection of SNAP-25 in 10 µg of rat brain lysate by colorimetric immunoblot analysis using Goat anti-mouse IgG:HRP as the secondary antibody.

Cellular Localization

Cytoplasm

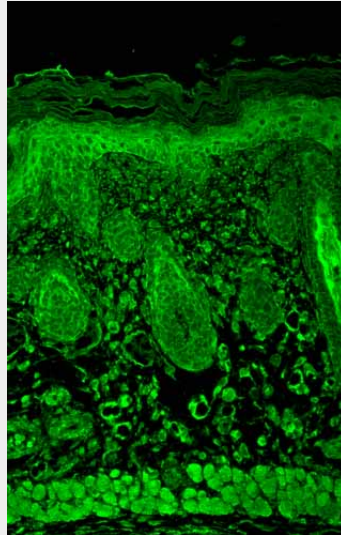
SNAP-25 Antibody - Protocols

Provided below are standard protocols that you may find useful for product applications.

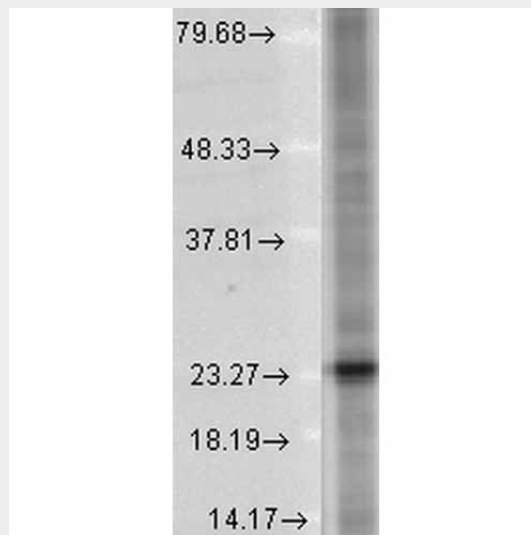
- [Western Blot](#)
- [Blocking Peptides](#)
- [Dot Blot](#)

- [Immunohistochemistry](#)
- [Immunofluorescence](#)
- [Immunoprecipitation](#)
- [Flow Cytometry](#)
- [Cell Culture](#)

SNAP-25 Antibody - Images



Immunohistochemistry analysis using Mouse Anti-SNAP25 Monoclonal Antibody, Clone SP-12 (ASM10122). Tissue: backskin. Species: Mouse. Fixation: Bouin's Fixative and paraffin-embedded. Primary Antibody: Mouse Anti-SNAP25 Monoclonal Antibody (ASM10122) at 1:100 for 1 hour at RT. Secondary Antibody: FITC Goat Anti-Mouse (green) at 1:50 for 1 hour at RT. Localization: Positive muscle, epidermal and dermal staining.



Western Blot analysis of Human Cell lysates showing detection of SNAP25 protein using Mouse Anti-SNAP25 Monoclonal Antibody, Clone SP-12 (ASM10122). Load: 15 µg. Block: 1.5% BSA for 30 minutes at RT. Primary Antibody: Mouse Anti-SNAP25 Monoclonal Antibody (ASM10122) at 1:1000 for 2 hours at RT. Secondary Antibody: Sheep Anti-Mouse IgG: HRP for 1 hour at RT.

SNAP-25 Antibody - Background

Synaptosomal-associated protein 25 (SNAP-25) is a membrane bound protein anchored to the

cytosolic face of membrane via palmitoyl side chains in the middle of the molecule (1). It is a component of the SNARE complex, which is proposed to account for the specificity of membrane fusion and to directly execute fusion by forming a tight complex that brings the synaptic vesicle and plasma membranes together (2).

SNAP25 exists as two alternatively spliced isoforms, SMAP25A and SNAP25B. These isoforms are differentially expressed in neurons and neuroendocrine cells and they differ by 9 amino acids in the central portion of the protein (3).

SNAP-25 Antibody - References

1. Hodel A. (1998) Int J. Biochem Cell Biol. 30(10): 1069-1073.
2. Sudhof T.C., and Rizo J. (2002) Nat Rev Neurosci. 3(8): 641-653.
3. Puffer E.B., et al. (2001) Biochemistry. 40(31): 9374-9378.