

**Product Description:** VPAC2 antibody, human, C-term.  
VIPR2  
Vasoactive intestinal peptide receptor 2  
G Protein-coupled receptor  
Polyclonal antibody raised against the  
C-terminus of the human VPAC2 receptor

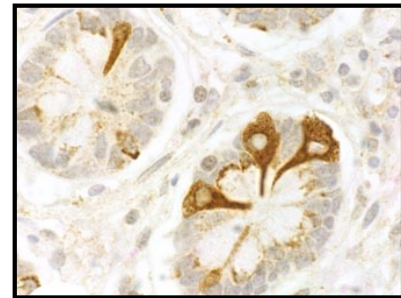
**Product-No.:** S8-9023-S-R

**Immunogen:** residues 419-438 coupled to KLH (NP\_003373)  
KLH- LQFHRGSRAQSFLQTETSVI

**Host:** Rabbit

**Form:** serum with 0.02% NaN<sub>3</sub> as preservative

**Quantity:** 50 µl



VPAC2 receptor immunoreactivity in mucosa of human small intestine.

**Applications:** ICH (p), IC, W  
W = Western blot (1:5000)  
IC = Immunocytochemistry (1:5000)  
ICH (p) = Immunohistochemistry of formalin-fixed, paraffin-embedded tissues (1:2500)

**Species cross-reactivity:** human

**Sensitivity:** 50 ng

**Storage:** 4 °C short term  
-20 °C long term

