

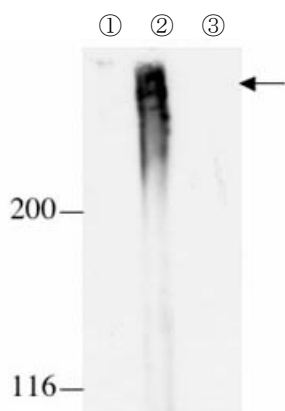


## Anti Rat Cubilin Polyclonal Antibody

Endocytic receptors Cubilin and Megalin are colocalized in the renal proximal tubule. Among the ligands are vitamin transcobalamin(TC)-B12, vitamin D-binding protein(DBP), albumin, apolipoprotein(apoA- I ) etc. From the fact renal failure is accompanied by the dysfunction of Cubilin, Cubilin is expected to involve the disease development of kidney.

This antibody was established from the purified serum of rabbits immunized with partial peptide of rat Cubilin. This antibody is useful for Western blotting.

Package Size	25 $\mu$ g (100 $\mu$ L/vial)
Format	Rabbit polyclonal antibody 0.25mg/mL
Buffer	PBS [containing 2% Block Ace as a stabilizer, 0.1% Proclin as a bacteriostat]
Storage	Below -20°C
Purification method	This antibody was purified from rabbit serum by affinity chromatography.
Working dilution	Western Blotting: 2~5 $\mu$ g/mL



### Western Blotting

Sample : 200 $\mu$ g /lane

- 1) Rat heart lysate (Negative Control)
- 2) Rat kidney lysate
- 3) Rat liver lysate (Negative Control)

### Preparation of antibodies and instruction

Dr. Akihiko Saito at Department of Applied Molecular Medicine, Dr. Fumitake Gejyo at Biological Functions and Medical Control Homeostatic Regulation and Development, Niigata University Graduate School of Medical and Dental Sciences



## Anti Rat Cubilin Polyclonal Antibody

### 【Reference】

1. Christensen EI. et al. : Am J Physiol Renal Physiol. 2001 Apr;280(4):F562-73
2. Moestrup SK. et al. : J Biol Chem. 1998 Feb 27;273(9):5235-42
3. Aminoff M. et al. : Nat Genet. 1999 Mar;21(3):309-13
4. Lindblom A. et al. : J Biol Chem. 1999 Mar 5;274(10):6374-80

#### Manufacturer



**Medicinal Chemistry Pharmaceutical Co., Ltd.**

#### **Kobe Research Institute**

7-1-14 Minatojimaminami-machi, Chuo-ku, Kobe, Japan 650-0047

Telephone: +81-78-945-7075 FAX:+81-78-306-0694

URL:<https://soyaku.co.jp/english/> tech-kobe@soyaku.co.jp

#### Previous manufacturer



**Trans Genic Inc.**