

**FNIP1 Antibody**  
Catalog # ASM10568**Specification**

---

**FNIP1 Antibody - Product Information**

Application	<b>WB</b>
Primary Accession	<a href="#">Q8TF40</a>
Other Accession	<a href="#">NP_001008738.2</a>
Host	<b>Rabbit</b>
Reactivity	<b>Mouse, Rat</b>
Clonality	<b>Polyclonal</b>

**Description**

Rabbit Anti-Human FNIP1 Polyclonal

**Target/Specificity**

Detects ~130 kDa.

**Other Names**

FNIP1 Antibody, Folliculin-interacting protein 1 Antibody, Folliculin interacting protein 1 Antibody, KIAA1961 Antibody

**Immunogen**

Synthetic peptide from the mid-protein of Human FNIP1

**Purification**

Peptide Affinity Purified

Storage **-20°C****Storage Buffer**

PBS, 50% glycerol, 0.09% sodium azide

Shipping Temperature **Blue Ice or 4°C****Certificate of Analysis**

A 1:1000 dilution of SPC-718 was sufficient for detection of FNIP1 in 15 µg of mouse kidney cell lysates by ECL immunoblot analysis using goat anti-rabbit IgG:HRP as the secondary antibody.

**Cellular Localization**

Cytoplasm

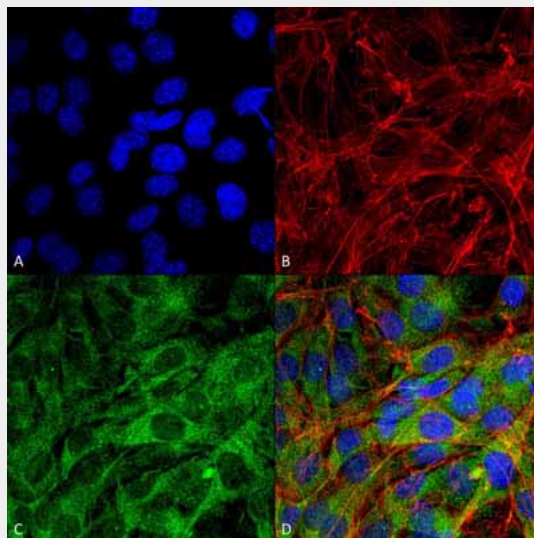
**FNIP1 Antibody - Protocols**

Provided below are standard protocols that you may find useful for product applications.

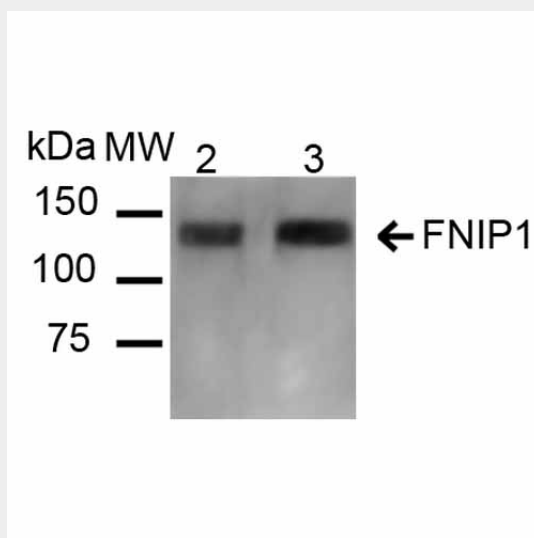
- [Western Blot](#)
- [Blocking Peptides](#)
- [Dot Blot](#)
- [Immunohistochemistry](#)
- [Immunofluorescence](#)
- [Immunoprecipitation](#)

- [Flow Cytometry](#)
- [Cell Culture](#)

**FNIP1 Antibody - Images**



Immunocytochemistry/Immunofluorescence analysis using Rabbit Anti-FNIP1 Polyclonal Antibody (ASM10568). Tissue: C2C12 Cells (Mouse Myoblast cell line). Species: Mouse. Fixation: 4% Formaldehyde for 15 min at RT. Primary Antibody: Rabbit Anti-FNIP1 Polyclonal Antibody (ASM10568) at 1:100 for 60 min at RT. Secondary Antibody: Goat Anti-Rabbit ATTO 488 at 1:200 for 60 min at RT. Counterstain: Phalloidin Texas Red F-Actin stain; DAPI (blue) nuclear stain at 1:1000, 1:5000 for 60 min at RT, 5 min at RT. Localization: Cytoplasm . Magnification: 60X. (A) DAPI (blue) nuclear stain (B) Phalloidin Texas Red F-Actin stain (C) FNIP1 Antibody (D) Composite.



Western blot analysis of Mouse, Rat Kidney showing detection of ~131 kDa FNIP1 protein using Rabbit Anti-FNIP1 Polyclonal Antibody (ASM10568). Lane 1: Molecular Weight Ladder (MW). Lane 2: Mouse Kidney cell lysates. Lane 3: Rat Kidney cell lysates. Load: 20 µg. Block: 5% Skim Milk in 1X TBST. Primary Antibody: Rabbit Anti-FNIP1 Polyclonal Antibody (ASM10568) at 1:1000 for 16 hours at 4°C. Secondary Antibody: Goat Anti-Rabbit IgG: HRP at 1:2000 for 60 min at RT. Color Development: ECL solution for 6 min at RT. Predicted/Observed Size: ~131 kDa.