

Phospho-HSPB1 (S15) antibody

Product Information

Catalog No.:	FNab09818
Size:	100µg
Form:	liquid
Purification:	Immunogen affinity purified
Purity:	≥95% as determined by SDS-PAGE
Host:	Rabbit
Clonality:	polyclonal
Clone ID:	None
IsoType:	IgG
Storage:	PBS with 0.02% sodium azide and 50% glycerol pH 7.3, -20°C for 12 months (Avoid repeated freeze / thaw cycles.)

Background

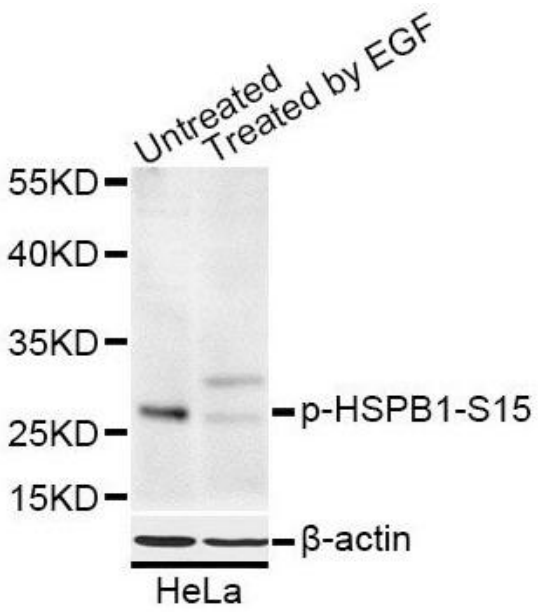
The protein encoded by this gene is induced by environmental stress and developmental changes. The encoded protein is involved in stress resistance and actin organization and translocates from the cytoplasm to the nucleus upon stress induction. Defects in this gene are a cause of Charcot-Marie-Tooth disease type 2F (CMT2F) and distal hereditary motor neuropathy (dHMN).

Immunogen information

Immunogen:	Phospho-HSPB1-S15
Synonyms:	Heat shock protein beta-1 (HspB1) 28 kDa heat shock protein Estrogen-regulated 24 kDa protein Heat shock 27 kDa protein (HSP 27) Stress-responsive protein 27 (SRP27) HSPB1 HSP27 HSP28
Observed MW:	28 kDa
Uniprot ID :	P04792

Application

Reactivity:	Human, Mouse, Rat
Tested Application:	ELISA, WB, IHC, IP
Recommended dilution:	WB: 1:500 - 1:2000; IHC: 1:50 - 1:200; IP: 1:50 - 1:100
Image:	



HeLa cells were subjected to SDS PAGE followed by western blot with FNab09818 at dilution of 1:1000