

Elite Pre-stained Protein Ladder

#Cat: NB-45-00067-500 Size: 0.5ml
 #Cat: NB-45-00067-2500 Size: 2.5ml

The Elite Pre-stained Protein Ladder is a three-colour protein standard with 10 pre-stained proteins covering a wide range of molecular weights from 6.5 to 270 kDa. Designed for monitoring protein separation during SDS-PAGE, verifying Western transfer efficiency on membranes and for approximating the size of proteins.

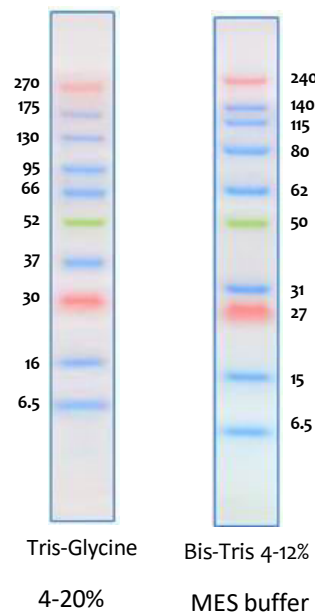
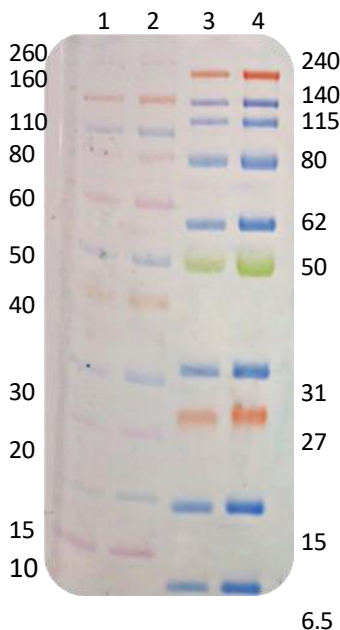
Features

- High-intensity, 3-colour MW determination
- Ultra-clear and expanded MW range (6.5-270 kDa).
- Clear separation for high MW proteins
- Up to 100% electroblot transfer efficiency.

*Performance Data: 4-12% Bis-Tris MES SDS

- Lane 1: Novex Sharp (ThermoFisher) 5µl
- Lane 2: Novex Sharp (ThermoFisher) 10µl
- Lane 3: Neo Biotech Elite Protein Ladder 5µl
- Lane 4: Neo Biotech Elite Protein Ladder 10µl

*Qamar S, Cambridge Institute for Medical Research, Cambridge, UK, October 2018.



Recommended Use

- 3 µl or 5 µl per loading for clear visualization during electrophoresis on 15-well or 10-well mini-gel, respectively.
- 2.5 µl per well for general Western transferring.

Storage Buffer

62.5 mM Tris-H₃PO₄ (pH 7.5 at 25 °C), 1 mM EDTA, 2% SDS, 10 mM DTT, 1 mM NaN₃, 33% glycerol

Quality Control

Under suggested conditions, ELITE Prestained Protein Ladder resolves 10 major bands in 4-12% Bis-Tris Gel (MES buffer) and after Western blotting on Nitrocellulose membrane.

Storage

Stable for up to 2 weeks at

25°C. Stable for up to 3

months at 4°C.

For long term storage, store at -20°C.

Ordering Information

Name	Pack Size	Product Code
0.5 ml Elite Pre-stained Protein Ladder	2 x 0.25ml	NB-45-00067-500
2.5 ml Elite Pre-stained Protein Ladder	10 x 0.25ml	NB-45-00067-2500