



# ProteinExpress

ProteinExpress Co., Ltd.  
Chiba University Inohana Innovation Plaza  
1-8-15, Inohana, Chuo-ku,  
Chiba-shi, Chiba 260-0856, Japan  
Tel: +81-43-202-5755, Fax: +81-43-202-5756  
E-mail: [antibody@proteinexpress.co.jp](mailto:antibody@proteinexpress.co.jp)  
Web: [www.proteinexpress.co.jp](http://www.proteinexpress.co.jp)

## Anti-Mouse GCC2 (KIAA0336) Polyclonal Antibody, Rabbit

**Code # :** MK03360310 (Lot# XXX)

**Gene :** mouse GRIP and coiled-coil domain-containing protein 2 (mGCC2, mKIAA0336)

**Immunogen :** GX0491 (GST-fusion protein, 243 amino acids)  
KVRVHNVLKQQKNKSVSQVETEGAKQEREHLEMLIDQLKIKLQDSQNSLQISVSEYQTLQAEHD  
TLLERHNRMLQETVTKEAELREKLSVQSENTMMKSEHSQTMQQLTSQNEALRTSFRDQVRH  
LQDEHRKTVETLQHQLSKLEAQLFQLKSEPSTRSPASSHQPSKSLRERRTTDLPLDMHTVARE  
EGEGMETTDESSEVSSAGTHIQSLEQLLSSPDTKLERLAETSLWHNEFTKEELA

**Format :** Rabbit IgG purified with Protein A affinity chromatography.

**Constitution :** PBS containing with 50% glycerol and 0.02% of NaN<sub>3</sub>

**Quantity :** 100 µg (200 µL)

**Specificity :** Specific to recombinant protein GX0491. This antibody detects endogenous mGCC2 protein in several tissues and cells. Details are shown in the InGaP database (<http://webcreate.kazusa.or.jp/create/index.jsp>). Other species have not been tested.

**Application :** Western blotting (1 : 1,000), Immunoprecipitation, Immunohistochemistry. Other applications have not been tested.

**Storage :** Store at -20°C. Avoid freeze-thaw cycles.

**References :** 1) Hara, Y. *et al.*: *DNA Res.*, 10, 129 (2003).  
2) Koga, H. *et al.*: *DNA Res.*, 11, 293 (2004).  
3) Luke, M.R. *et al.*: *J Biol Chem.*, 278, 4216 (2003).

**For research use only, not for diagnostic use**



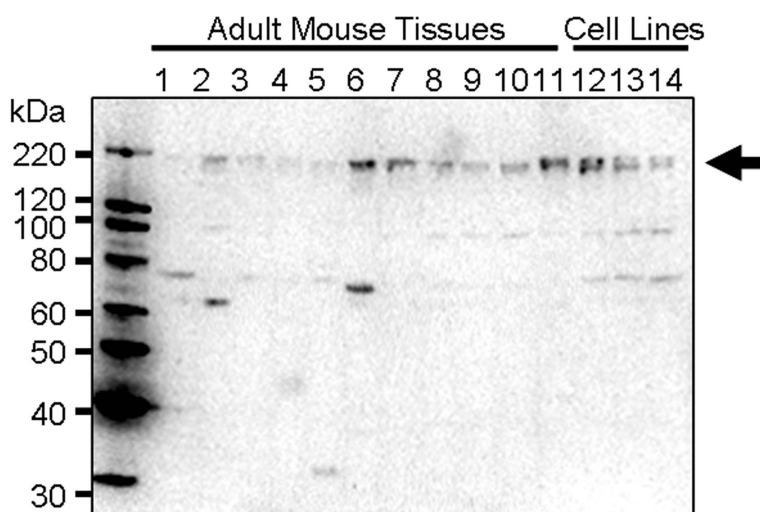
**Kazusa DNA Research Institute**  
2-6-7, Kazusa-kamatari,  
Kisarazu, Chiba 292-0818 JAPAN  
<http://www.kazusa.or.jp>



# ProteinExpress

ProteinExpress Co., Ltd.  
Chiba University Inohana Innovation Plaza  
1-8-15, Inohana, Chuo-ku,  
Chiba-shi, Chiba 260-0856, Japan  
Tel: +81-43-202-5755, Fax: +81-43-202-5756  
E-mail: [antibody@proteinexpress.co.jp](mailto:antibody@proteinexpress.co.jp)  
Web: [www.proteinexpress.co.jp](http://www.proteinexpress.co.jp)

## Anti-Mouse GCC2 (KIAA0336)



### Western blot analysis

#### Adult Mouse Tissues -

1:Heart, 2:Lung, 3:Liver, 4:Muscle, 5:Kidney,  
6:Testis, 7:Pancreas, 8:Thymus, 9:Spleen,  
10:Brain, 11:Prostate.

#### Cell Lines -

12:B16 cells, 13:F9 cells, 14:Neuro2A cells.



**Kazusa DNA Research Institute**

2-6-7, Kazusa-kamatari,  
Kisarazu, Chiba 292-0818 JAPAN  
<http://www.kazusa.or.jp>