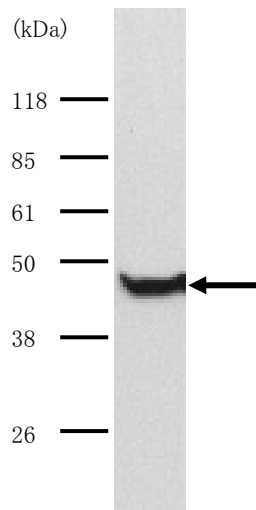




Anti Human CapG Polyclonal Antibody

CapG : macrophage-capping protein

Package Size	25 μ g (100 μ L / vial)
Format	Rabbit polyclonal antibody 0.25mg/mL
Buffer	PBS [containing 2% Block Ace as a stabilizer, 0.1% Proclin as a bacteriostat]
Storage	Store below -20 $^{\circ}$ C Once thawed, store at 4 $^{\circ}$ C. Repeated freeze-thaw cycles should be avoided.
Purification method	This antibody was purified from rabbit serum immunized with GST-human CapG by GST affinity chromatography.
Working dilution	For western blotting ;0.1~0.5 μ g/mL This antibody reacts with mouse CapG.



Western blotting

Sample : Human fibroblast extract

Dr. Yutsudo, M

At Research Institute for Microbial Diseases, Osaka University Japan



Anti Human Cap G Polyclonal Antibody

CapG : macrophage-capping protein

【Reference】

1. Dabiri GA. et al. : J Biol Chem. 1992 Aug 15;267(23):16545-52
2. Witke W. et al. : J Cell Biol. 2001 Aug 20;154(4):775-84
3. Pellieux C. et al. : J Biol Chem. 2003 Aug 1;278(31):29136-44

Manufacturer



Medicinal Chemistry Pharmaceutical Co., Ltd.

Kobe Research Institute

7-1-14 Minatojimaminami-machi, Chuo-ku, Kobe, Japan 650-0047

Telephone: +81-78-945-7075 FAX:+81-78-306-0694

URL:<https://soyaku.co.jp/english/> tech-kobe@soyaku.co.jp

Previous manufacturer



Trans Genic Inc.