

Product Description: NT2 antibody, human, C-term.
NTR2
Neurotensin 2 receptor
G Protein-coupled receptor
Polyclonal antibody raised against the
C-terminus of the human NT2 receptor

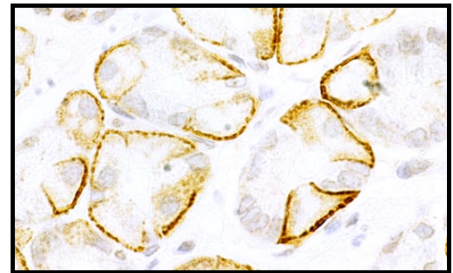
Product-No.: S13-9039-S-R

Immunogen: residues 390-410 coupled to KLH (NP_036476)
KLH- pqsptlmdtasgfgdppetrt

Host: Rabbit

Form: serum with 0.02% NaN₃ as preservative

Quantity: 50 µl



NT2 receptor immunoreactivity in a human gastric mucosa.

Applications: ICH (p), IC, W
W = Western blot (1:5000)
IC = Immunocytochemistry (1:5000)
ICH (p) = Immunohistochemistry of formalin-fixed, paraffin-embedded tissues (1:2500)

Species cross-reactivity: human

Sensitivity: 50 ng

Storage: 4 °C short term
-20 °C long term

