



## Anti Human PEDF Monoclonal Antibody (Clone No. 14K)

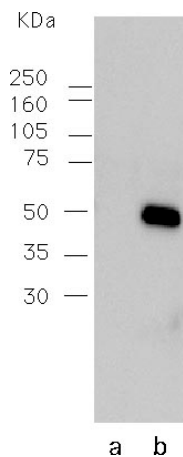
Pigment Epithelium-Derived Factor ( PEDF ), a protein previously shown to have neurotrophic activity, is indispensable for neuronal development, differentiation and existence adjacent to retina.

The amount of inhibitory PEDF produced by retinal cells was positively correlated with oxygen concentrations, suggesting that its loss play a permissive role in ischemia-driven retinal neovascularization. So that, PEDF is likely to contribute to regulate of blood vessels growth in eye by creating a permissive environment for angiogenesis when oxygen is limiting and an inhibitory environment oxygen concentrations are normal or high ( Science Vol 285: 245-248,1999).

PEDF may be a therapeutic target pathologic ocular neovascularization as well as for retinoblastomas. This antibody could detect PEDF with western-blotting method in medium of retinal pigment epithelium cell. This antibody is useful in research for angionenesis and neuronal system.

Package Size	50 $\mu$ g (200 $\mu$ L / vial)
Format	Mouse monoclonal antibody 0.25 mg/mL
Buffer	Block Ace as a stabilizer, containing 0.1%Proclin as bacteriostat
Storage	Store below -20°C Once thawed, store at 4°C. Repeated freeze-thaw cycles should be avoided.
Clone No.	14K
Sub class	IgG1
Purification method	The cell line was grown on serum free medium, from which the antibody was purified by Protein G affinity chromatography.

Immunoreactivity for western-Blotting      Optimum concentration: 0.5 ~1  $\mu$ g/mL



Sample	: PEDF in the medium of retinal pigment epithelium
Primary antibody	: a Control mouse IgG b Anti PEDF monoclonal antibody
2 nd antibody	: a,b : HRP labeled anti mouse IgG



## Anti Human PEDF Monoclonal Antibody (Clone No. 14K)

### 【Reference】

1. Stratikos, E. et al. :Recombinant human pigment epithelium-derived factor (PEDF): Characterization of PEDF overexpressed and secreted by eukaryotic cells. *Protein Science* 5: 2575-2582, 1996.
2. D. W. Dawson. et al. :Pigment epithelium-derived factor: a potent inhibitor of angiogenesis. *Science* 285: 245-248, 1999.
3. Joachim Spranger, Martin Osterhoff, et al.: Loss of the antiangiogenic pigment epithelium-derived factor in patients with angiogenic eye disease. *Diabetes*.50: 2641-2645, 2001.

\* These references are the background of PEDF , and are not this antibody examples .

#### Manufacturer



Medicinal Chemistry Pharmaceutical Co., Ltd.

#### Kobe Research Institute

7-1-14 Minatojimaminami-machi, Chuo-ku, Kobe, Japan 650-0047

Telephone: +81-78-945-7075 FAX:+81-78-306-0694

URL:<https://soyaku.co.jp/english/> tech-kobe@soyaku.co.jp

#### Previous manufacturer



Trans Genic Inc.