

**REEP1/2 Antibody**  
**REEP1/2 Antibody, Clone S326D-29**  
**Catalog # ASM10314**

**Specification**

---

**REEP1/2 Antibody - Product Information**

Application	<b>WB</b>
Primary Accession	<a href="#">O8VCD6</a>
Other Accession	<a href="#">NP_001191843.1</a>
Host	<b>Mouse</b>
Isotype	<b>IgG1</b>
Reactivity	<b>Human, Mouse, Rat</b>
Clonality	<b>Monoclonal</b>

**Description**

Mouse Anti-Mouse REEP1/2 Monoclonal IgG1

**Target/Specificity**

Detects ~30kDa. Cross-reacts with REEP1.

**Other Names**

Receptor expression-enhancing protein 2 Antibody, C5orf19 Antibody, SGC32445 Antibody, LOC682105 Antibody

**Immunogen**

Fusion protein amino acids 111-254 (Cytoplasmic C-terminus) of mouse REEP2.

**Purification**

Protein G Purified

Storage **-20°C**

**Storage Buffer**

PBS pH7.4, 50% glycerol, 0.1% sodium azide

Shipping Temperature **Blue Ice or 4°C**

**Certificate of Analysis**

A 1:100 dilution of SMC-482 was sufficient for detection of REEP1/2 in 20 µg of mouse brain lysate by ECL immunoblot analysis using Goat anti-mouse IgG:HRP as the secondary antibody.

**Cellular Localization**

Mitochondrion | Mitochondrion Membrane | Endoplasmic Reticulum | Endoplasmic Reticulum Membrane

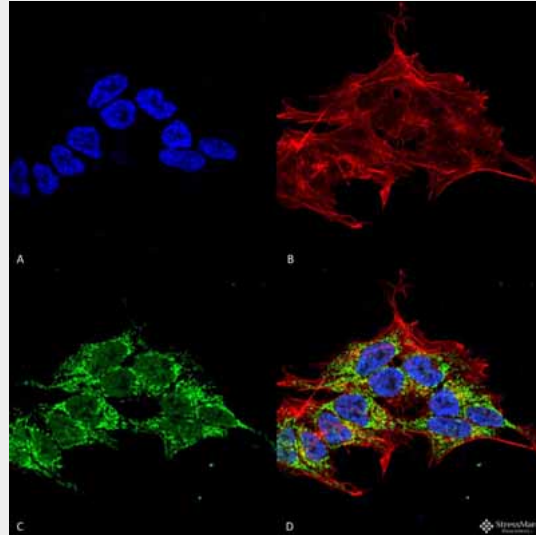
**REEP1/2 Antibody - Protocols**

Provided below are standard protocols that you may find useful for product applications.

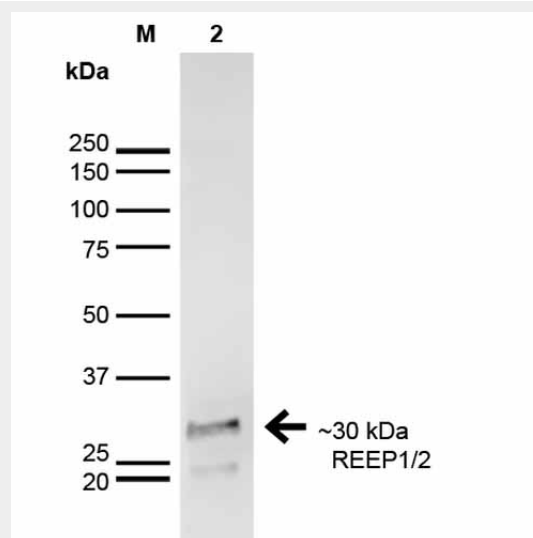
- [Western Blot](#)
- [Blocking Peptides](#)
- [Dot Blot](#)

- [Immunohistochemistry](#)
- [Immunofluorescence](#)
- [Immunoprecipitation](#)
- [Flow Cytometry](#)
- [Cell Culture](#)

### REEP1/2 Antibody - Images



Immunocytochemistry/Immunofluorescence analysis using Mouse Anti-REEP1/2 Monoclonal Antibody, Clone S326D-29 (ASM10314). Tissue: Neuroblastoma cell line (SK-N-BE). Species: Human. Fixation: 4% Formaldehyde for 15 min at RT. Primary Antibody: Mouse Anti-REEP1/2 Monoclonal Antibody (ASM10314) at 1:50 for 60 min at RT. Secondary Antibody: Goat Anti-Mouse ATTO 488 at 1:100 for 60 min at RT. Counterstain: Phalloidin Texas Red F-Actin stain; DAPI (blue) nuclear stain at 1:1000; 1:5000 for 60 min RT, 5 min RT. Localization: Mitochondrion, Mitochondrion Membrane, Endoplasmic Reticulum, Endoplasmic Reticulum Membrane. Magnification: 60X. (A) DAPI (blue) nuclear stain (B) Phalloidin Texas Red F-Actin stain (C) REEP1/2 Antibody (D) Composite.



Western Blot analysis of Rat Brain showing detection of ~30 kDa REEP1-2 protein using Mouse Anti-REEP1-2 Monoclonal Antibody, Clone S326D-29 (ASM10314). Lane 1: MW Ladder. Lane 2: Rat Brain. Load: 20 µg. Block: 2% GE Healthcare Blocker for 1 hour at RT. Primary Antibody: Mouse

Anti-REEP1-2 Monoclonal Antibody (ASM10314) at 1:1000 for 16 hours at 4°C. Secondary Antibody: Goat Anti-Mouse IgG: HRP at 1:200 for 1 hour at RT. Color Development: ECL solution for 6 min at RT. Predicted/Observed Size: ~30 kDa. Other Band(s): ~22 kDa.

**REEP1/2 Antibody - References**

1. Hurt C.M., et al. (2014) Brain Res. 1545: 12-22.