

Ankyrin-B Antibody
Ankyrin B Antibody, Clone S105-17
Catalog # ASM10248**Specification**

Ankyrin-B Antibody - Product Information

Application	WB
Primary Accession	O01484
Other Accession	NP_001120965.1
Host	Mouse
Isotype	IgG2A
Reactivity	Human, Mouse, Rat
Clonality	Monoclonal

Description

Mouse Anti-Human Ankyrin-B Monoclonal IgG2A

Target/Specificity

Detects ~>200kDa. No cross-reactivity against Ankyrin-G.

Other Names

ANK-2 Antibody, ANK2 Antibody, Ankyrin 2 Antibody, Ankyrin-2 Antibody, Ankyrin nonerythroid Antibody, Brain ankyrin Antibody, non-erythroid ankyrin Antibody, Ankyrin-B Antibody

Immunogen

Synthetic peptide amino acids 203-496 of human Ankyrin-B

Purification

Protein G Purified

Storage **-20°C****Storage Buffer**

PBS pH7.4, 50% glycerol, 0.09% sodium azide

Shipping Temperature **Blue Ice or 4°C****Certificate of Analysis**

1 µg/ml of SMC-414 was sufficient for detection of Ankyrin-B in 20 µg of rat brain lysate by colorimetric immunoblot analysis using Goat anti-mouse IgG:HRP as the secondary antibody.

Cellular Localization

Cytoplasm | Cytoskeleton | Myofibril | Sarcomere | M line | Apical Cell Membrane | Cell Membrane

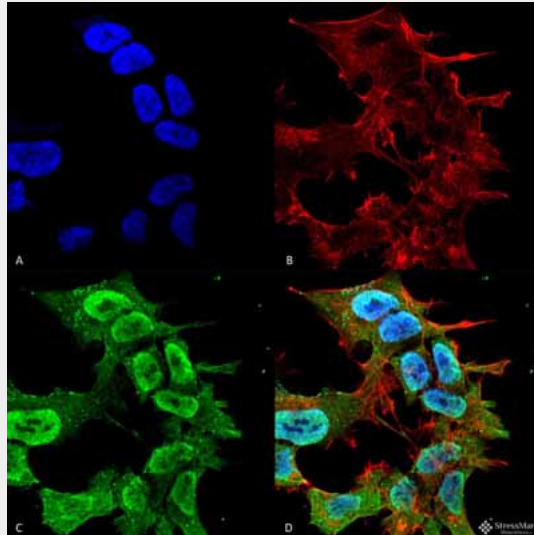
Ankyrin-B Antibody - Protocols

Provided below are standard protocols that you may find useful for product applications.

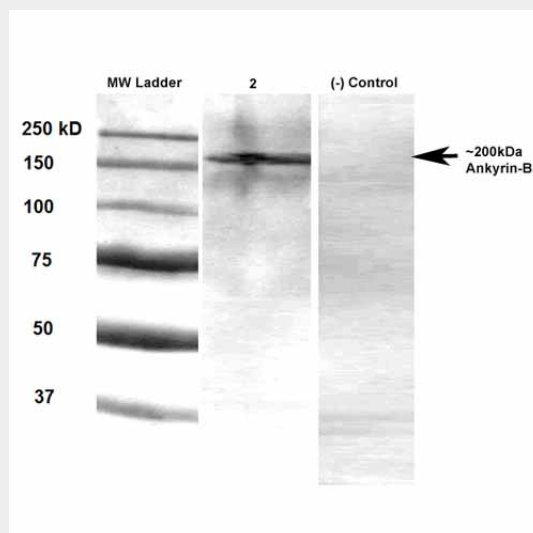
- [Western Blot](#)
- [Blocking Peptides](#)
- [Dot Blot](#)
- [Immunohistochemistry](#)

- [Immunofluorescence](#)
- [Immunoprecipitation](#)
- [Flow Cytometry](#)
- [Cell Culture](#)

Ankyrin-B Antibody - Images



Immunocytochemistry/Immunofluorescence analysis using Mouse Anti-Ankyrin-B Monoclonal Antibody, Clone S105-17 (ASM10248). Tissue: Neuroblastoma cell line (SK-N-BE). Species: Human. Fixation: 4% Formaldehyde for 15 min at RT. Primary Antibody: Mouse Anti-Ankyrin-B Monoclonal Antibody (ASM10248) at 1:100 for 60 min at RT. Secondary Antibody: Goat Anti-Mouse ATTO 488 at 1:100 for 60 min at RT. Counterstain: Phalloidin Texas Red F-Actin stain; DAPI (blue) nuclear stain at 1:1000; 1:5000 for 60 min RT, 5 min RT. Localization: Cytoplasm, Nucleus. Magnification: 60X. (A) DAPI (blue) nuclear stain (B) Phalloidin Texas Red F-Actin stain (C) Ankyrin-B Antibody (D) Composite.



Western Blot analysis of Rat brain membrane lysate showing detection of Ankyrin B protein using Mouse Anti-Ankyrin B Monoclonal Antibody, Clone S105-17 (ASM10248). Primary Antibody: Mouse Anti-Ankyrin B Monoclonal Antibody (ASM10248) at 1:1000.

Ankyrin-B Antibody - Background

Ankyrins are a family of adaptor proteins that mediate the attachment of integral membrane proteins to the spectrin-actin based membrane skeleton (1). Ankyrins have binding sites for the beta subunit of spectrin and at least 12 families of integral membrane proteins. This linkage is required to maintain the integrity of the plasma membranes and to anchor specific ion channels, ion exchangers and ion transporters in the plasma membrane.

Ankyrin-B Antibody - References

1. Bennett V., Baines A.J. (2001) *Physiol. Rev.* 81 (3): 1353-92.