



Macrophage related Antibody
Anti Human CD36 Monoclonal Antibody
(Clone No. NF189)

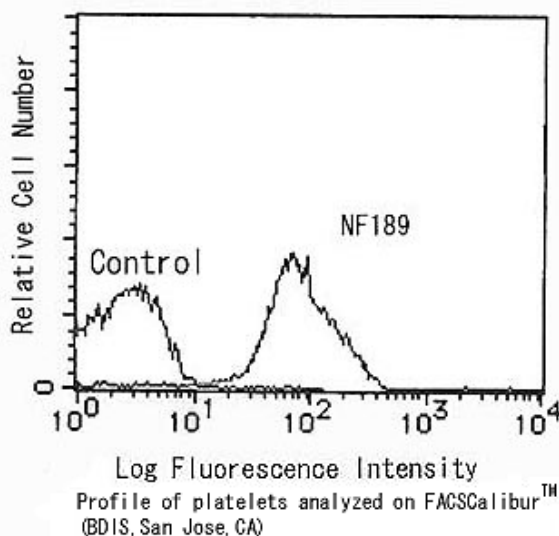
CD36 is single-strand glycoprotein with molecular weight of 88kDa, and is known to limited versatility receptor. The functions are 1) thrombospondin (TSP) receptor, 2) infected erythrocyte receptor with Plasmodium falciparum, 3) oxidation LDL receptor, 4) phosphatidyl serin (PS) receptor, 5) multifunction adhesion molecules.

CD36 is detected in platelet, monocyte, macrophage, endothelium, and multiple human tumor cell line, but is not in lymphocyte or granulocyte.

This antibody has been proved to be useful for flow cytometry with high affinity.

Package Size	50 μ g (200 μ L/vial)
Format	Mouse monoclonal antibody 0.25 mg/mL
Buffer	PBS—containing 2%Block Ace as a stabilizer, 0.1% Proclin as a bacteriostat
Storage	Store below -20°C until needed. Repeated freeze-thaw cycles should be avoid. When you use,dissolve water and freeze aliquots.
Clone No.	NF189
Subclass	IgG1
Purification method	The splenic lymphocytes from BALB/c mouse, immunized with human platelet membrane fraction were fused to myeloma P3U1 cells. The positive cell line (NF189) were grown in ascitic fluid of BALB/c mouse, from which the antibody was purified by Protein G affinity chromatography.

Working dilution for flow cytometry: 0.5~20 μ g/ml





Macrophage related Antibody
Anti Human CD36 Monoclonal Antibody
(Clone No. NF189)

Manufacturer



Medicinal Chemistry Pharmaceutical Co., Ltd.

Kobe Research Institute

7-1-14 Minatojimaminami-machi, Chuo-ku, Kobe, Japan 650-0047

Telephone: +81-78-945-7075 FAX:+81-78-306-0694

URL:<https://soyaku.co.jp/english/> tech-kobe@soyaku.co.jp

Previous manufacturer



Trans Genic Inc.