

Human Prostate Carcinoma Cells (DU145)

#Cat : NB-26-01888

Size : 500,000Cells

Catalog #: NB-26-01888

Cell #: >5x10⁵ cells

Product Format: Frozen Vial

Storage: Liquid Nitrogen until ready for culture. While Culturing keep in 37°C CO₂ incubator

General Information

Human Prostate Carcinoma Cells (DU 145) were derived from a prostate carcinoma patient. They were taken from a metastatic site in the brain of a 69 year old Caucasian male. DU 145 are not hormone-sensitive and do not express prostate-specific antigen (PSA). Cells are supplied in frozen vials with more than 5x10⁵ cells/vial. Universal Full Growth Medium (NB-26-01762) is recommended to culture the cells.

Product is for Research use only.

Frozen Vials are shipped in a Dry Ice Package.

Characterization of The Cells

Human Prostate Carcinoma Cells (DU 145) are tested negative for HIV-1, HBV, HCV, and mycoplasma.

Handling Of Arriving Cells

When you receive the dry ice package with cells in frozen vials, transfer the frozen vials of cells into a -80°C freezer for short period storage or a liquid nitrogen tank for long-term storage.

Protocol For Thawing the Cells and Subculture

1. Pre-coating of T25 flasks: Add 2 ml of Universal Coating Solution (NB-26-01691) into a T25 flask to cover the whole surface of the flask, 5 mins later, dispose the excessive coating solution by aspiration. The flask is ready to be used.
2. Thaw the frozen cell vial in a 37°C water bath first, and then transfer the cells into the pre-coated T25 flask with 10 ml of Universal Full Growth Medium (NB-26-01762), cells usually become confluent with 5-7 days.
3. To passage the cells, rinse the cells in a T25 flask with 5 ml HBSS (RT) twice; then add 2 ml Universal Detachment Solution (RT) (NB-26-01691) into one T25 flask; gently dispose the excessive Universal Detachment Solution within 20 seconds by aspiration.
4. Leave the T25 flask with the cells at RT or 37°C for 1 min (most cells usually will detach from the surface within 1-2 mins) or monitor the cells under a microscope until most of cells become rounded up, and then gently tap the flask against the bench surface, and the cells will move on the surface of the flask when monitoring under microscope.

FOR RESEARCH USE ONLY

Neo Biotech Reagents Are For In Vitro And Certain Non-Human In Vivo Experimental Use Only and Not Intended for Use in Any Human Clinical Investigation, Diagnosis, Prognosis, Or Treatment. The Above Analyses Are Merely Typical Guides. They Are Not to Be Construed as Being Specifications. All Of the Above Information Is, To the Best of Our Knowledge, True and Accurate. However, Since the Conditions of Use Are Beyond Our Control, All Recommendations or Suggestions Are Made Without Guarantee, Express or Implied, On Our Part. We Disclaim All Liability in Connection with The Use of The Information Contained Herein or Otherwise, AND ALL SUCH RISKS ARE ASSUMED BY THE USER. WE FURTHER EXPRESSLY DISCLAIM ALL WARRANTIES OF MERCHANTABILITY AND FITNESS FOR A PARTICULAR PURPOSE.

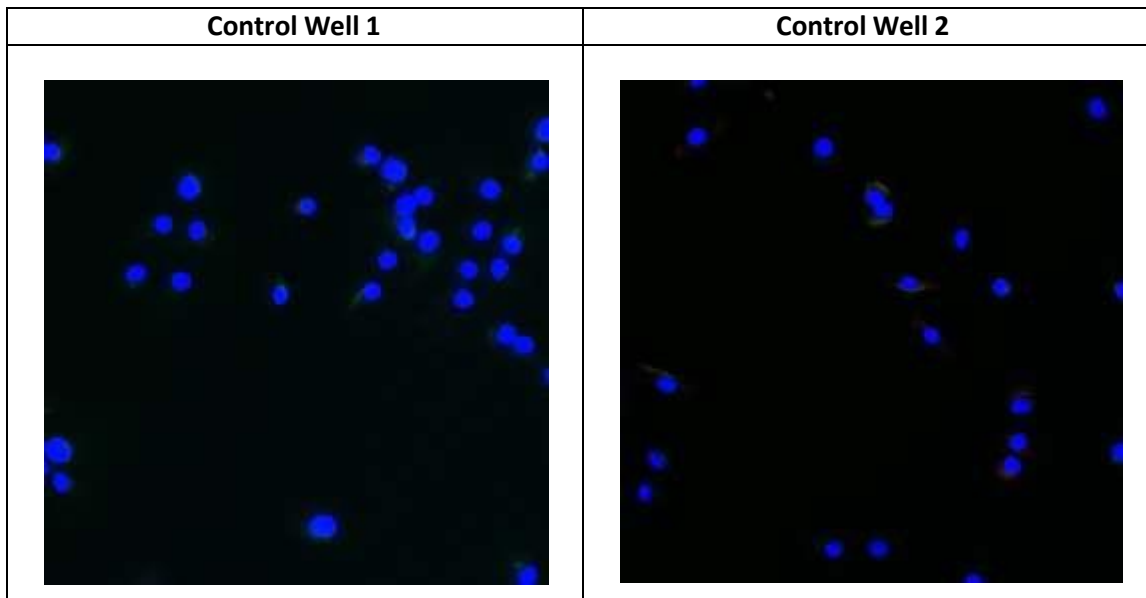
5. Add 5 ml of Universal Neutralization Buffer (NB-26-01747) and spin down the cells with an 800 g centrifugation for 5 mins.
6. Re-suspend the cell pellet with 10 ml or 15 ml of Universal Full Growth Medium and transfer 5 ml each into 2 or 3 pre-coated T25 flasks (for 1/2 to 1/3 subculture ratio).
7. Change the medium every 2 or 3 days and the cells usually become confluent within 7 days (when split at a 1/3 ratio).

KRT18 and KRT 19 Staining of DU145

Control: Fixed cells were incubated with only a mixture of anti-mouse and anti-rabbit fluorescent secondary antibodies to ensure there is no specific staining. Which none was seen.

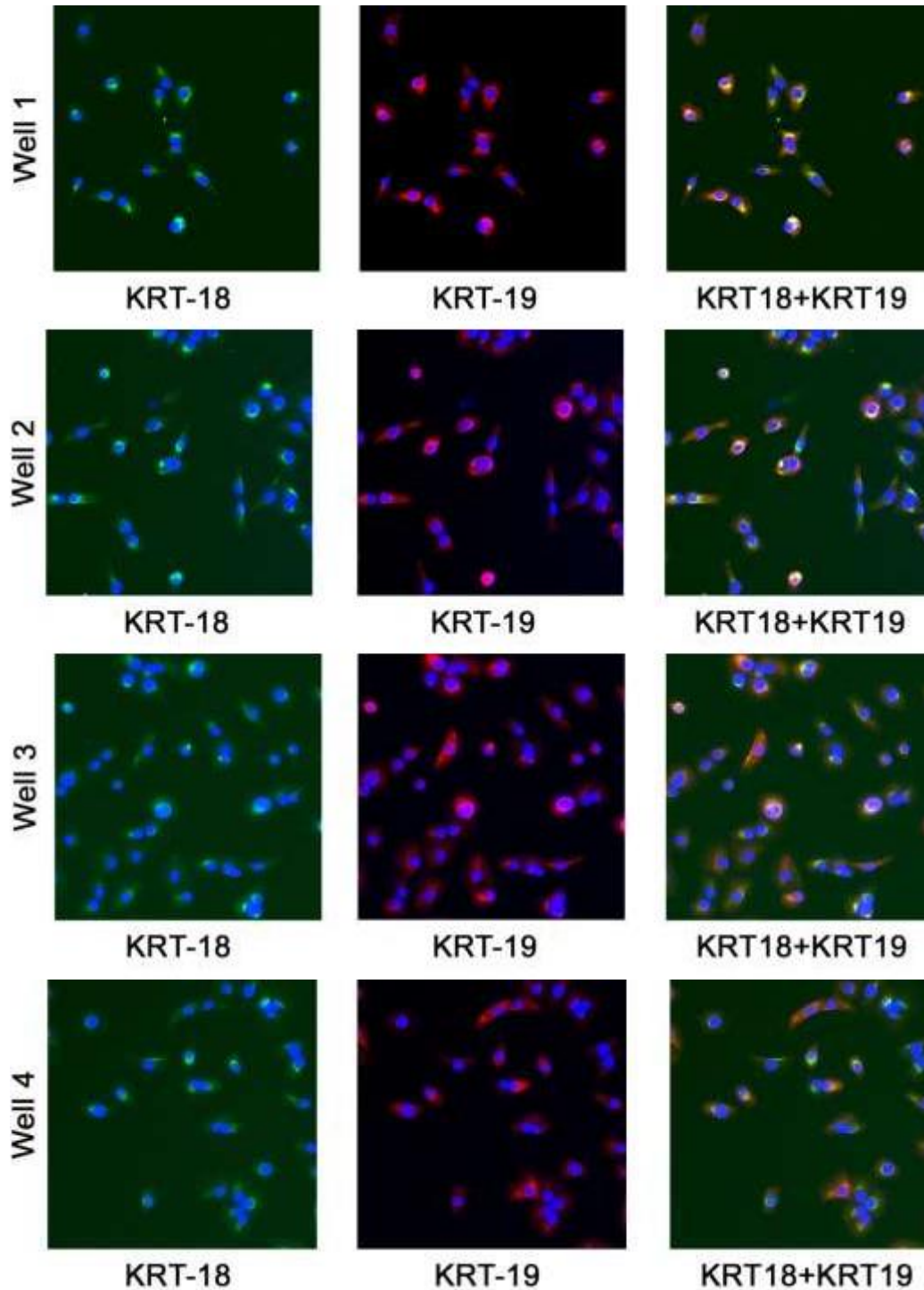
Experimental wells: Fixed cells were stained with both KRT19 and KRT 18. The co-localization of KRT18 with KRT19 indicates the cancer nature of the cells.

Procedure: Cells are plated in multi-well chamber slides fixed with 4% paraformaldehyde (10 min at room temperature), rinsed with PBS. Fixed cells were incubated with diluted primary antibodies (KRT18, 1:300 and KRT19, 1:500; antibodies diluted with Antibody Dilution Buffer for ICC and IHC, NB-26-01604-10ML) for 2 hours at room temperature, rinsed 3 times 15 min each in PBS pH7.4. Then incubated with fluorescent secondary antibodies (anti-mouse Cy2 and anti-rabbit Cy3 from) for 30 minutes at room temp., washed in PBS same as above and mounted using iBright medium (NB-26-01823).



FOR RESEARCH USE ONLY

Neo Biotech Reagents Are For In Vitro And Certain Non-Human In Vivo Experimental Use Only and Not Intended for Use in Any Human Clinical Investigation, Diagnosis, Prognosis, Or Treatment. The Above Analyses Are Merely Typical Guides. They Are Not to Be Construed as Being Specifications. All Of the Above Information Is, To the Best of Our Knowledge, True and Accurate. However, Since the Conditions of Use Are Beyond Our Control, All Recommendations or Suggestions Are Made Without Guarantee, Express or Implied, On Our Part. We Disclaim All Liability in Connection with The Use of The Information Contained Herein or Otherwise, AND ALL SUCH RISKS ARE ASSUMED BY THE USER. WE FURTHER EXPRESSLY DISCLAIM ALL WARRANTIES OF MERCHANTABILITY AND FITNESS FOR A PARTICULAR PURPOSE.



FOR RESEARCH USE ONLY

Neo Biotech Reagents Are For In Vitro And Certain Non-Human In Vivo Experimental Use Only and Not Intended for Use in Any Human Clinical Investigation, Diagnosis, Prognosis, Or Treatment. The Above Analyses Are Merely Typical Guides. They Are Not to Be Construed as Being Specifications. All Of the Above Information Is, To the Best of Our Knowledge, True and Accurate. However, Since the Conditions of Use Are Beyond Our Control, All Recommendations or Suggestions Are Made Without Guarantee, Express or Implied, On Our Part. We Disclaim All Liability in Connection with The Use of The Information Contained Herein or Otherwise, AND ALL SUCH RISKS ARE ASSUMED BY THE USER. WE FURTHER EXPRESSLY DISCLAIM ALL WARRANTIES OF MERCHANTABILITY AND FITNESS FOR A PARTICULAR PURPOSE.