

Adenosine receptor A1 Antibody
Catalog # ASM10557**Specification****Adenosine receptor A1 Antibody - Product Information**

| | |
|-------------------|-----------------------------|
| Application | WB |
| Primary Accession | P30542 |
| Other Accession | NP_000665.1 |
| Host | Rabbit |
| Reactivity | Human |
| Clonality | Polyclonal |

Description

Rabbit Anti-Human Adenosine receptor A1 Polyclonal

Target/Specificity

Detects ~37 kDa.

Other Names

ADORA1 Antibody, Adenosine receptor A1 Antibody, Adenosine A1 Receptor Antibody, A1AR Antibody, A1R Antibody, AA1R Antibody, ADORA 1 antibody, RDC 7 Antibody, RDC7 Antibody, Ri Antibody, Adenosine receptor (A1) Antibody

Immunogen

Synthetic peptide from the C-terminal of Human Adenosine receptor A1

Purification

Peptide Affinity Purified

Storage **-20°C****Storage Buffer**

PBS, 50% glycerol, 0.09% sodium azide

Shipping Temperature **Blue Ice or 4°C****Certificate of Analysis**

A 1:1000 dilution of SPC-702 was sufficient for detection of Adenosine receptor A1 in 15 µg of human HeLa cell lysates by ECL immunoblot analysis using goat anti-rabbit IgG:HRP as the secondary antibody.

Cellular Localization

Cell Membrane | Multi-Pass Membrane Protein

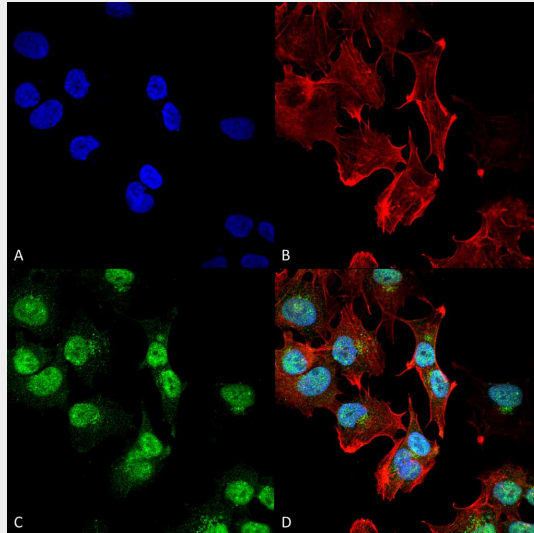
Adenosine receptor A1 Antibody - Protocols

Provided below are standard protocols that you may find useful for product applications.

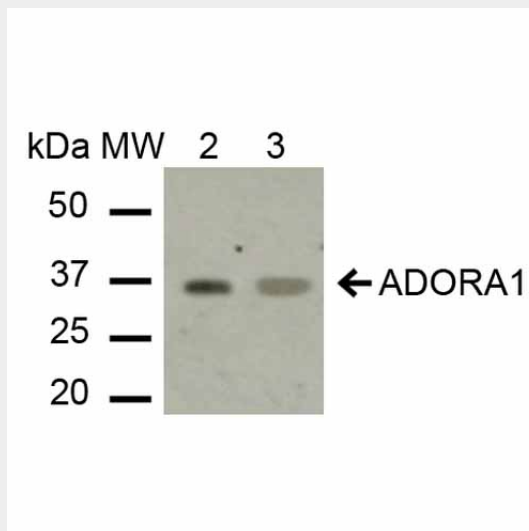
- [Western Blot](#)
- [Blocking Peptides](#)
- [Dot Blot](#)
- [Immunohistochemistry](#)

- [Immunofluorescence](#)
- [Immunoprecipitation](#)
- [Flow Cytometry](#)
- [Cell Culture](#)

Adenosine receptor A1 Antibody - Images



Immunocytochemistry/Immunofluorescence analysis using Rabbit Anti-Adenosine receptor A1 Polyclonal Antibody (ASM10557). Tissue: Neuroblastoma cell line (SK-N-BE). Species: Human. Fixation: 4% Formaldehyde for 15 min at RT. Primary Antibody: Rabbit Anti-Adenosine receptor A1 Polyclonal Antibody (ASM10557) at 1:100 for 60 min at RT. Secondary Antibody: Goat Anti-Mouse ATTO 488 at 1:200 for 60 min at RT. Counterstain: Phalloidin Texas Red F-Actin stain; DAPI (blue) nuclear stain at 1:1000, 1:5000 for 60 min at RT, 5 min at RT. Localization: Cell Membrane, Multi-Pass Membrane Protein. Magnification: 60X. (A) DAPI (blue) nuclear stain (B) Phalloidin Texas Red F-Actin stain (C) Adenosine receptor A1 Antibody (D) Composite.



Western blot analysis of Human HeLa and 293Trap cell lysates showing detection of ~36.5 kDa Adenosine receptor A1 protein using Rabbit Anti-Adenosine receptor A1 Polyclonal Antibody (ASM10557). Lane 1: Molecular Weight Ladder (MW). Lane 2: HeLa cell lysates. Lane 3: 293Trap cell lysates. Load: 15 µg. Block: 5% Skim Milk in 1X TBST. Primary Antibody: Rabbit Anti-Adenosine receptor A1 Polyclonal Antibody (ASM10557) at 1:1000 for 2 hours at RT. Secondary Antibody:

Goat Anti-Rabbit IgG: HRP at 1:1000 for 60 min at RT. Color Development: ECL solution for 6 min in RT. Predicted/Observed Size: ~36.5 kDa.