

## FER antibody

### Product Information

Catalog No.:	FNab03076
Size:	100µg
Form:	liquid
Purification:	Immunogen affinity purified
Purity:	≥95% as determined by SDS-PAGE
Host:	Rabbit
Clonality:	polyclonal
Clone ID:	None
IsoType:	IgG
Storage:	PBS with 0.02% sodium azide and 50% glycerol pH 7.3, -20°C for 12 months(Avoid repeated freeze / thaw cycles.)

### Background

Tyrosine-protein kinase that acts downstream of cell surface receptors for growth factors and plays a role in the regulation of the actin cytoskeleton, microtubule assembly, lamellipodia formation, cell adhesion, cell migration and chemotaxis. Acts downstream of EGFR, KIT, PDGFRA and PDGFRB. Acts downstream of EGFR to promote activation of NF-kappa-B and cell proliferation. May play a role in the regulation of the mitotic cell cycle. Plays a role in the insulin receptor signaling pathway and in activation of phosphatidylinositol 3-kinase. Acts downstream of the activated FCER1 receptor and plays a role in FCER1(high affinity immunoglobulin epsilon receptor)-mediated signaling in mast cells. Plays a role in the regulation of mast cell degranulation. Plays a role in leukocyte recruitment and diapedesis in response to bacterial lipopolysaccharide(LPS). Plays a role in synapse organization, trafficking of synaptic vesicles, the generation of excitatory postsynaptic currents and neuron-neuron synaptic transmission. Plays a role in neuronal cell death after brain damage. Phosphorylates CTTN, CTNND1, PTK2/FAK1, GAB1, PECAM1 and PTPN11. May phosphorylate JUP and PTPN1. Can phosphorylate STAT3, but the biological relevance of this depends on cell type and stimulus.

### Immunogen information

Immunogen:	fer(fps/fes related) tyrosine kinase
Synonyms:	Tyrosine-protein kinase Fer Feline encephalitis virus-related kinase FER Fujinami poultry sarcoma/Feline sarcoma-related protein Fer Proto-oncogene c-Fer Tyrosine kinase 3 p94-Fer FER TYK3
Observed MW:	95 kDa

Uniprot ID : P16591

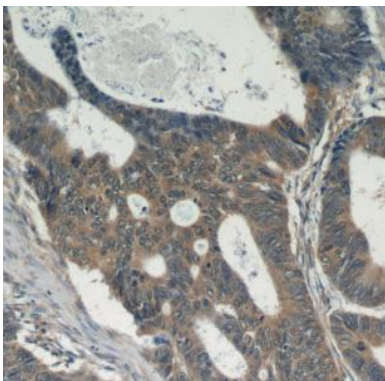
### Application

Reactivity: Human, Mouse

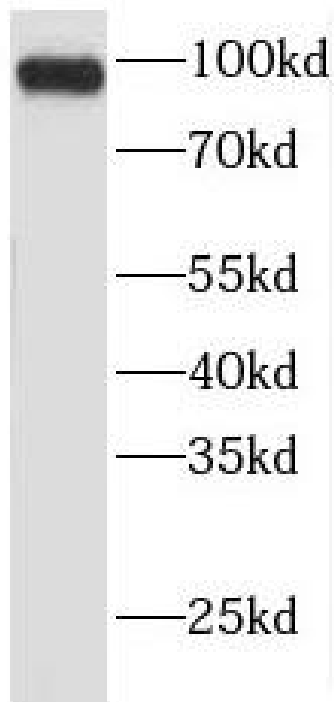
Tested Application: ELISA, WB, IHC, FC, IF

Recommended dilution: WB: 1:500-1:2000; IHC: 1:20-1:200; IF: 1:20-1:200

Image:



Immunohistochemistry of paraffin-embedded human colon cancer tissue slide using FNab03076(FER Antibody) at dilution of 1:50



NIH/3T3 cells were subjected to SDS PAGE followed by western blot with FNab03076(FER Antibody) at dilution of 1:1000