

A13673

Leader in Biomolecular Solutions for Life Science



# KLF4 Rabbit mAb

Catalog No.: A13673

Recombinant

12 Publications

## Basic Information

### Observed MW

55kDa

### Calculated MW

55kDa

### Category

SMab Recombinant Monoclonal Antibody

### Applications

WB,IHC-P,IF/ICC,IP,ELISA

### Cross-Reactivity

Human,Mouse,Rat

### CloneNo number

ARC0721

## Recommended Dilutions

<b>WB</b>	1:1000 - 1:2000
<b>IHC-P</b>	1:200 - 1:2000
<b>IF/ICC</b>	1:200 - 1:1000
<b>IP</b>	0.5µg-4µg antibody for 200µg-400µg extracts of whole cells
<b>ELISA</b>	Recommended starting concentration is 1 µg/mL. Please optimize the concentration based on your specific assay requirements.

## Contact

 [www.abclonal.com](http://www.abclonal.com)

## Background

This gene encodes a protein that belongs to the Kruppel family of transcription factors. The encoded zinc finger protein is required for normal development of the barrier function of skin. The encoded protein is thought to control the G1-to-S transition of the cell cycle following DNA damage by mediating the tumor suppressor gene p53. Mice lacking this gene have a normal appearance but lose weight rapidly, and die shortly after birth due to fluid evaporation resulting from compromised epidermal barrier function. Alternative splicing results in multiple transcript variants encoding different isoforms.

## Immunogen Information

<b>Gene ID</b>	<b>Swiss Prot</b>
9314	O43474

### Immunogen

A synthetic peptide corresponding to a sequence within amino acids 300-400 of human KLF4 (O43474).

### Synonyms

EZF; GKLF; KLF4

## Product Information

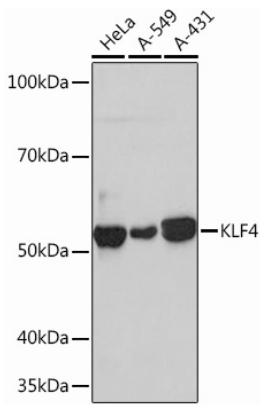
<b>Source</b>	<b>Isotype</b>	<b>Purification</b>
Rabbit	IgG	Affinity purification

### Storage

Store at -20°C. Avoid freeze / thaw cycles.

Buffer: PBS with 0.02% sodium azide,0.05% BSA,50% glycerol,pH7.3.

## Validation Data



Western blot analysis of various lysates using KLF4 Rabbit mAb (A13673) at 1:1000 dilution.

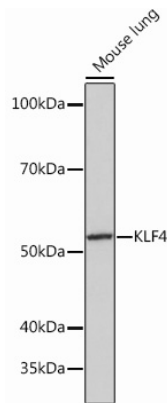
Secondary antibody: HRP-conjugated Goat anti-Rabbit IgG (H+L) (AS014) at 1:10000 dilution.

Lysates/proteins: 25µg per lane.

Blocking buffer: 3% nonfat dry milk in TBST.

Detection: ECL Basic Kit (RM00020).

Exposure time: 30s.



Western blot analysis of lysates from Mouse lung, using KLF4 Rabbit mAb (A13673) at 1:1000 dilution.

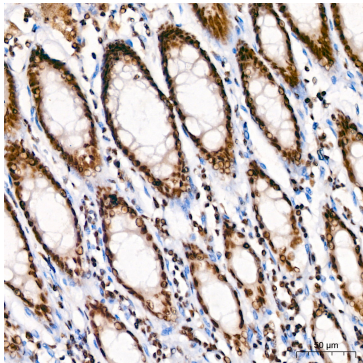
Secondary antibody: HRP-conjugated Goat anti-Rabbit IgG (H+L) (AS014) at 1:10000 dilution.

Lysates/proteins: 25µg per lane.

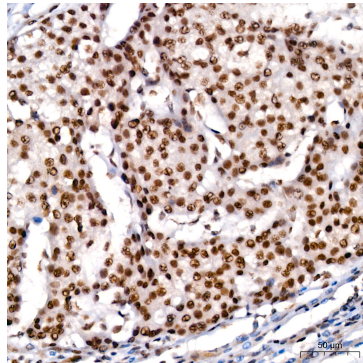
Blocking buffer: 3% nonfat dry milk in TBST.

Detection: ECL Basic Kit (RM00020).

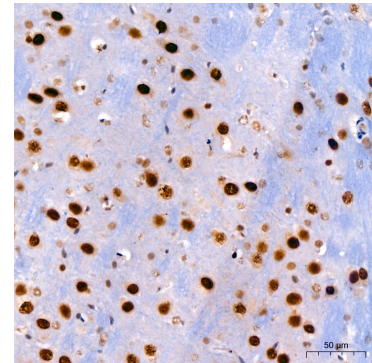
Exposure time: 3min.



Immunohistochemistry analysis of paraffin-embedded Human colon using KLF4 Rabbit mAb (A13673) at dilution of 1:200 (40x lens). High pressure antigen retrieval performed with 0.01M Citrate Bufferr (pH 6.0) prior to IHC staining.

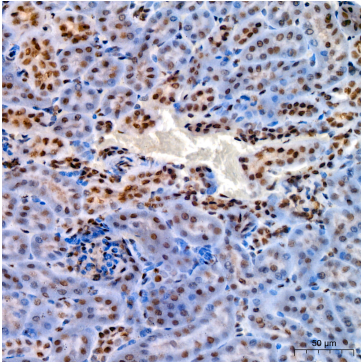


Immunohistochemistry analysis of paraffin-embedded Human liver cancer using KLF4 Rabbit mAb (A13673) at dilution of 1:200 (40x lens). High pressure antigen retrieval performed with 0.01M Citrate Bufferr (pH 6.0) prior to IHC staining.

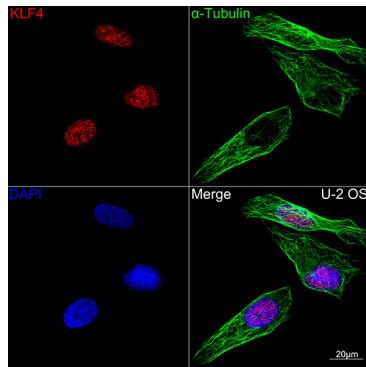


Immunohistochemistry analysis of paraffin-embedded Mouse brain using KLF4 Rabbit mAb (A13673) at dilution of 1:200 (40x lens). High pressure antigen retrieval performed with 0.01M Citrate Bufferr (pH 6.0) prior to IHC staining.

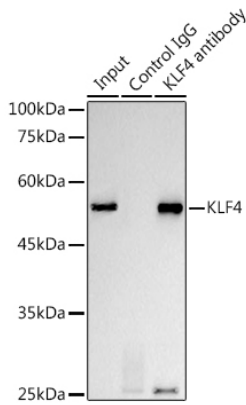
## Validation Data



Immunohistochemistry analysis of paraffin-embedded Mouse kidney using KLF4 Rabbit mAb (A13673) at dilution of 1:200 (40x lens). High pressure antigen retrieval performed with 0.01M Citrate Bufferr (pH 6.0) prior to IHC staining.



Confocal imaging of U-2 OS cells using KLF4 Rabbit mAb (A13673,dilution 1:100)(Red). The cells were counterstained with  $\alpha$ -Tubulin Mouse mAb (AC012,dilution 1:400) (Green). DAPI was used for nuclear staining (blue). Objective: 100x.



Immunoprecipitation analysis of 300  $\mu$ g extracts from HeLa cells using 3  $\mu$ g KLF4 Rabbit mAb (A13673). Western blot was performed from the immunoprecipitate using KLF4 Rabbit mAb (A13673) at a dilution of 1:1000.